

# OsTE Rabbit pAb

Catalog No.: A20368

## Basic Information

### Observed MW

75kDa

### Calculated MW

56kDa

### Category

Primary antibody

### Applications

ELISA, WB

### Cross-Reactivity

Oryza sativa

## Background

Component of the anaphase promoting complex/cyclosome (APC/C), a cell cycle-regulated E3 ubiquitin-protein ligase complex that controls progression through mitosis and the G1 phase of the cell cycle.

## Recommended Dilutions

WB 1:500 - 1:2000

## Immunogen Information

### Gene ID

4331448

### Swiss Prot

Q10SH0

### Immunogen

A synthetic peptide corresponding to a sequence within amino acids 1-100 of Oryza sativa OsTE. (Q10SH0).

### Synonyms

TAD1; TE; OsCCS52A; OsTE

## Contact

☎ | 400-999-6126

✉ | [cn.market@abclonal.com.cn](mailto:cn.market@abclonal.com.cn)

🌐 | [www.abclonal.com.cn](http://www.abclonal.com.cn)

## Product Information

### Source

Rabbit

### Isotype

IgG

### Purification

Affinity purification

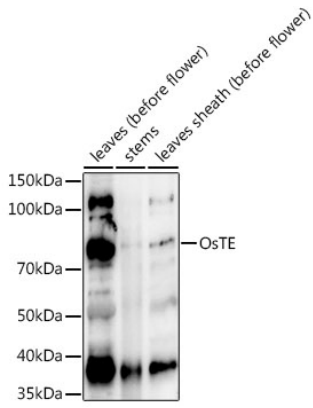
### Storage

Store at -20°C. Avoid freeze / thaw cycles.

Buffer: PBS with 0.01% thimerosal, 50% glycerol, pH7.3.

## Validation Data

---



Western blot analysis of extracts of various tissues from the japonica rice (*Oryza sativa* L.) variety Zhonghua 11, using OsTE Rabbit pAb (A20368) at 1:1000 dilution.

Secondary antibody: HRP Goat Anti-Rabbit IgG (H+L) (AS014) at 1:10000 dilution.

Lysates/proteins: 25µg per lane.

Blocking buffer: 3% nonfat dry milk in TBST.

Detection: ECL Enhanced Kit (RM00021).

Exposure time: 30s.