

# OsLIC1 Rabbit pAb

**Catalog No.: A20369**

## Basic Information

### Observed MW

50kDa

### Calculated MW

43kDa

### Category

Primary antibody

### Applications

ELISA, WB

### Cross-Reactivity

Oryza sativa

## Background

Transcriptional activator that binds double-stranded DNA and the single-stranded RNA polymers poly(rA), poly(rU) and poly(rG), but not poly(rC). Mediates optimal plant architecture through brassinosteroid (BR) signaling. May act as a negative regulator in sterol homeostasis. Acts as negative regulator of BR signaling. Binds to the specific DNA sequence 5'-CTCGC-3' of BZR1 promoter and negatively regulates BZR1. Acts as an antagonistic transcription factor of BZR1 to attenuate the BR signaling pathway and regulate leaf bending. Represses the expression of ILI1, and activates that of IBH1 to balance the regulation activity of BZR1

## Recommended Dilutions

**WB** 1:500 - 1:2000

## Immunogen Information

### Gene ID

4341994

### Swiss Prot

Q5Z807

### Immunogen

A synthetic peptide corresponding to a sequence within amino acids 90-190 of Oryza sativa OsLIC1. (Q5Z807).

### Synonyms

LIC; OsLIC; OsC3H46; OJ1215\_E11.23; OsLIC1

## Contact

☎ | 400-999-6126

✉ | [cn.market@abclonal.com.cn](mailto:cn.market@abclonal.com.cn)

🌐 | [www.abclonal.com.cn](http://www.abclonal.com.cn)

## Product Information

### Source

Rabbit

### Isotype

IgG

### Purification

Affinity purification

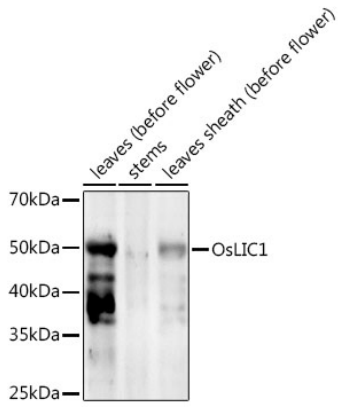
### Storage

Store at -20°C. Avoid freeze / thaw cycles.

Buffer: PBS with 0.01% thimerosal, 50% glycerol, pH7.3.

## Validation Data

---



Western blot analysis of extracts of various tissues from the japonica rice (*Oryza sativa* L.) variety Zhonghua 11, using OsLIC1 Rabbit pAb (A20369) at 1:1000 dilution.  
Secondary antibody: HRP Goat Anti-Rabbit IgG (H+L) (AS014) at 1:10000 dilution.  
Lysates/proteins: 25µg per lane.  
Blocking buffer: 3% nonfat dry milk in TBST.  
Detection: ECL Enhanced Kit (RM00021).  
Exposure time: 300s.