

Fluorescein Isothiocyanate/FITC Rabbit pAb

Catalog No.: A20385 **2 Publications**

Basic Information

Observed MW

25kDa/55kDa

Calculated MW

Category

Primary antibody

Applications

ELISA, WB

Cross-Reactivity

Species independent

Background

Fluorescein isothiocyanate (FITC) is a derivative of fluorescein used in wide-ranging applications. It is the original fluorescein molecule functionalized with an isothiocyanate reactive group (-N=C=S), replacing a hydrogen atom on the bottom ring of the structure. FITC is a fluorochrome dye that absorbs ultraviolet or blue light causing molecules to become excited and emit a visible yellow-green light. FITC is a commonly used marker for antibodies in immunofluorescent techniques since the conjugation of FITC to proteins is relatively easy and does not, in general, destroy the biological activity of the labeled protein. FITC is also widely used as a hapten to label different proteins.

Recommended Dilutions

WB 1:500 - 1:2000

Immunogen Information

Gene ID

Swiss Prot

Immunogen

FITC

Synonyms

Contact

☎ | 400-999-6126

✉ | cn.market@abclonal.com.cn

🌐 | www.abclonal.com.cn

Product Information

Source

Rabbit

Isotype

IgG

Purification

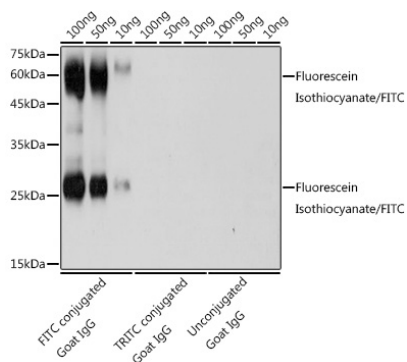
Affinity purification

Storage

Store at -20°C. Avoid freeze / thaw cycles.

Buffer: PBS with 0.05% proclin300, 50% glycerol, pH7.3.

Validation Data



The FITC rabbit polyclonal antibody (A20385) are tested in Western blot against FITC conjugated Goat IgG, TRITC conjugated Goat IgG and unconjugated Goat IgG. Secondary antibody: HRP Goat Anti-Rabbit IgG (H+L) (AS014) at 1:10000 dilution. Lysates/proteins: Refer to figures. Blocking buffer: 3% nonfat dry milk in TBST. Detection: ECL Basic Kit (RM00020). Exposure time: 1s.