

GPX8 Rabbit pAb

Catalog No.: A20390 **2 Publications**

Basic Information

Observed MW

24kDa

Calculated MW

24kDa

Category

Primary antibody

Applications

ELISA, WB

Cross-Reactivity

Human, Mouse, Rat

Background

Enables peroxidase activity. Predicted to be involved in cellular response to oxidative stress. Predicted to be located in endoplasmic reticulum lumen.

Recommended Dilutions

WB 1:500 - 1:1000

Immunogen Information

Gene ID

493869

Swiss Prot

Q8TED1

Immunogen

Recombinant fusion protein containing a sequence corresponding to amino acids 41-209 of human GPX8 (NP_001008398.2).

Synonyms

GPx-8; UNQ847; EPLA847; GSHPx-8; GPX8

Contact

☎ | 400-999-6126

✉ | cn.market@abclonal.com.cn

🌐 | www.abclonal.com.cn

Product Information

Source

Rabbit

Isotype

IgG

Purification

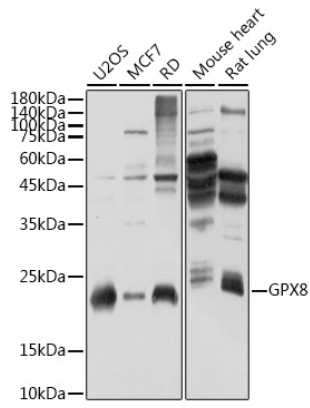
Affinity purification

Storage

Store at -20°C. Avoid freeze / thaw cycles.

Buffer: PBS with 0.05% proclin300, 50% glycerol, pH7.3.

Validation Data



Western blot analysis of extracts of various cell lines, using GPX8 antibody (A20390) at 1:1000 dilution.
Secondary antibody: HRP Goat Anti-Rabbit IgG (H+L) (AS014) at 1:10000 dilution.
Lysates/proteins: 25µg per lane.
Blocking buffer: 3% nonfat dry milk in TBST.
Detection: ECL Basic Kit (RM00020).
Exposure time: 10s.