

PLIN5 Rabbit pAb

Catalog No.: A20418 **1 Publications**

Basic Information

Observed MW

51kDa

Calculated MW

51kDa

Category

Primary antibody

Applications

ELISA, WB, IF/ICC

Cross-Reactivity

Human, Mouse, Rat

Background

Predicted to enable identical protein binding activity and lipase binding activity. Predicted to be involved in several processes, including negative regulation of peroxisome proliferator activated receptor signaling pathway; regulation of lipase activity; and regulation of lipid metabolic process. Located in intracellular membrane-bounded organelle and lipid droplet.

Recommended Dilutions

WB	1:500 - 1:1000
IF/ICC	1:50 - 1:200

Immunogen Information

Gene ID

440503

Swiss Prot

Q00G26

Immunogen

Recombinant fusion protein containing a sequence corresponding to amino acids 270-463 of human PLIN5 (NP_001013728.2).

Synonyms

MLDP; LSDA5; LSDP5; OXPAT; PLIN5

Contact

	400-999-6126
	cn.market@abclonal.com.cn
	www.abclonal.com.cn

Product Information

Source

Rabbit

Isotype

IgG

Purification

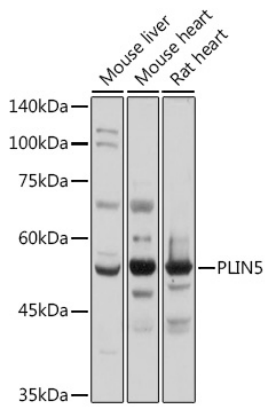
Affinity purification

Storage

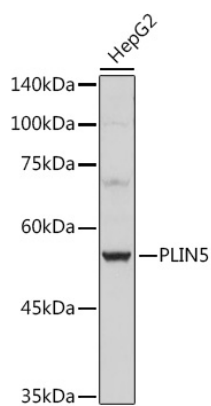
Store at -20°C. Avoid freeze / thaw cycles.

Buffer: PBS with 0.05% proclin300, 50% glycerol, pH7.3.

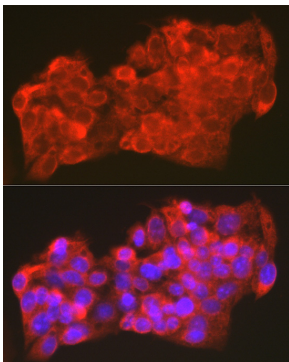
Validation Data



Western blot analysis of various lysates using PLIN5 Rabbit pAb (A20418) at 1:1000 dilution.
Secondary antibody: HRP Goat Anti-Rabbit IgG (H+L) (AS014) at 1:10000 dilution.
Lysates/proteins: 25µg per lane.
Blocking buffer: 3% nonfat dry milk in TBST.
Detection: ECL Basic Kit (RM00020).
Exposure time: 1s.



Western blot analysis of lysates from HepG2 cells, using PLIN5 Rabbit pAb (A20418) at 1:1000 dilution.
Secondary antibody: HRP Goat Anti-Rabbit IgG (H+L) (AS014) at 1:10000 dilution.
Lysates/proteins: 25µg per lane.
Blocking buffer: 3% nonfat dry milk in TBST.
Detection: ECL Basic Kit (RM00020).
Exposure time: 3s.



Immunofluorescence analysis of HepG2 cells using PLIN5 Rabbit pAb (A20418) at dilution of 1:100 (40x lens). Secondary antibody: Cy3 Goat Anti-Rabbit IgG (H+L) (AS007) at 1:500 dilution. Blue: DAPI for nuclear staining.