

# NKX6-1 Rabbit pAb

Catalog No.: A20419

## Basic Information

### Observed MW

45kDa/46kDa

### Calculated MW

38kDa

### Category

Primary antibody

### Applications

ELISA, IHC-P

### Cross-Reactivity

Human, Mouse, Rat

## Background

In the pancreas, NKX6.1 is required for the development of beta cells and is a potent bifunctional transcription regulator that binds to AT-rich sequences within the promoter region of target genes Iype et al. (2004) [PubMed 15056733].

## Recommended Dilutions

IHC-P 1:50 - 1:200

## Immunogen Information

### Gene ID

4825

### Swiss Prot

P78426

### Immunogen

A synthetic peptide corresponding to a sequence within amino acids 1-100 of human NKX6-1 (NP\_006159.2).

### Synonyms

NKX6A; NKX6.1; NKX6-1

## Contact

☎ | 400-999-6126

✉ | [cn.market@abclonal.com.cn](mailto:cn.market@abclonal.com.cn)

🌐 | [www.abclonal.com.cn](http://www.abclonal.com.cn)

## Product Information

### Source

Rabbit

### Isotype

IgG

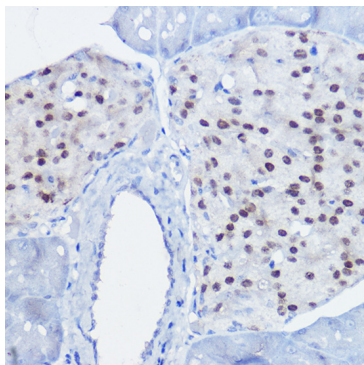
### Purification

Affinity purification

### Storage

Store at -20°C. Avoid freeze / thaw cycles.

Buffer: PBS with 0.05% proclin300, 50% glycerol, pH7.3.



Immunohistochemistry analysis of paraffin-embedded mouse pancreas using NKX6-1 Rabbit pAb (A20419) at dilution of 1:50 (40x lens). Perform high pressure antigen retrieval with 10 mM citrate buffer pH 6.0 before commencing with IHC staining protocol.