

TOMM5 Rabbit pAb

Catalog No.: A20439

Basic Information

Observed MW

Refer to figures

Calculated MW

6kDa

Category

Primary antibody

Applications

IF/ICC,ELISA

Cross-Reactivity

Human, Mouse

Background

Predicted to be involved in protein targeting to mitochondrion. Located in mitochondrion. Part of mitochondrial outer membrane translocase complex.

Recommended Dilutions

IF/ICC 1:50 - 1:200

ELISA Recommended starting concentration is 1 µg/mL. Please optimize the concentration based on your specific assay requirements.

Immunogen Information

Gene ID

401505

Swiss Prot

Q8N4H5

Immunogen

A synthetic peptide corresponding to a sequence within amino acids 1-51 of human TOMM5 (NP_001001790.1).

Synonyms

Tom5; C9orf105; bA613M10.3; TOMM5

Contact

☎ | 400-999-6126

✉ | cn.market@abclonal.com.cn

🌐 | www.abclonal.com.cn

Product Information

Source

Rabbit

Isotype

IgG

Purification

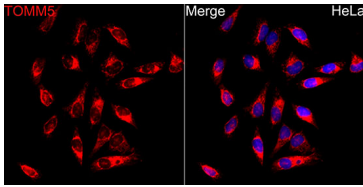
Affinity purification

Storage

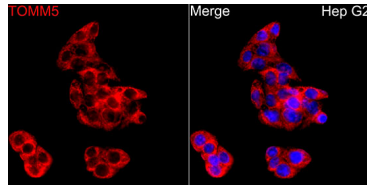
Store at -20°C. Avoid freeze / thaw cycles.

Buffer: PBS with 0.05% proclin300,50% glycerol,pH7.3.

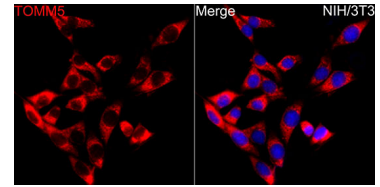
Validation Data



Immunofluorescence analysis of HeLa cells using TOMM5 Rabbit pAb (A20439) at dilution of 1:200 (40x lens). Secondary antibody: Cy3-conjugated Goat anti-Rabbit IgG (H+L) (AS007) at 1:500 dilution. Blue: DAPI for nuclear staining.



Immunofluorescence analysis of HepG2 cells using TOMM5 Rabbit pAb (A20439) at dilution of 1:200 (40x lens). Secondary antibody: Cy3-conjugated Goat anti-Rabbit IgG (H+L) (AS007) at 1:500 dilution. Blue: DAPI for nuclear staining.



Immunofluorescence analysis of NIH/3T3 cells using TOMM5 Rabbit pAb (A20439) at dilution of 1:200 (40x lens). Secondary antibody: Cy3-conjugated Goat anti-Rabbit IgG (H+L) (AS007) at 1:500 dilution. Blue: DAPI for nuclear staining.