

CD150/SLAM Rabbit pAb

Catalog No.: A2044 **1 Publications**

Basic Information

Observed MW

37kDa/65kDa

Calculated MW

37kDa

Category

Primary antibody

Applications

ELISA, WB

Cross-Reactivity

Human, Mouse

Background

Enables SH2 domain binding activity and identical protein binding activity. Involved in several processes, including negative regulation of CD40 signaling pathway; negative regulation of cytokine production; and positive regulation of MAPK cascade. Located in extracellular exosome.

Recommended Dilutions

WB 1:500 - 1:2000

Immunogen Information

Gene ID

6504

Swiss Prot

Q13291

Immunogen

Recombinant fusion protein containing a sequence corresponding to amino acids 21-237 of human CD150/SLAM (NP_003028.1).

Synonyms

SLAM; CD150; CDw150; CD150/SLAM

Contact

 | 400-999-6126

 | cn.market@abclonal.com.cn

 | www.abclonal.com.cn

Product Information

Source

Rabbit

Isotype

IgG

Purification

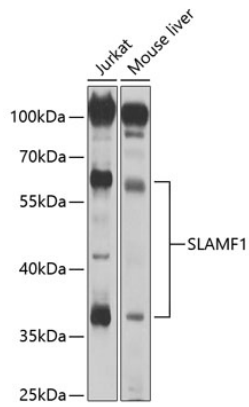
Affinity purification

Storage

Store at -20°C. Avoid freeze / thaw cycles.

Buffer: PBS with 0.02% sodium azide, 50% glycerol, pH 7.3.

Validation Data



Western blot analysis of extracts of various cell lines, using CD150/SLAM antibody (A2044) at 1:1000 dilution.

Secondary antibody: HRP Goat Anti-Rabbit IgG (H+L) (AS014) at 1:10000 dilution.

Lysates/proteins: 25µg per lane.

Blocking buffer: 3% nonfat dry milk in TBST.

Detection: ECL Basic Kit (RM00020).

Exposure time: 5s.