

# FPR1 Rabbit pAb

Catalog No.: A20455

## Basic Information

### Observed MW

Refer to figures

### Calculated MW

38kDa

### Category

Primary antibody

### Applications

ELISA, WB, IHC-P

### Cross-Reactivity

Human

## Background

This gene encodes a G protein-coupled receptor of mammalian phagocytic cells that is a member of the G-protein coupled receptor 1 family. The protein mediates the response of phagocytic cells to invasion of the host by microorganisms and is important in host defense and inflammation.

## Recommended Dilutions

WB 1:500 - 1:2000

IHC-P 1:50 - 1:200

## Immunogen Information

### Gene ID

2357

### Swiss Prot

P21462

### Immunogen

A synthetic peptide corresponding to a sequence within amino acids 250-350 of human FPR1 (NP\_002020.1).

### Synonyms

FPR; FMLP; FPR1

## Contact

☎ | 400-999-6126

✉ | [cn.market@abclonal.com.cn](mailto:cn.market@abclonal.com.cn)

🌐 | [www.abclonal.com.cn](http://www.abclonal.com.cn)

## Product Information

### Source

Rabbit

### Isotype

IgG

### Purification

Affinity purification

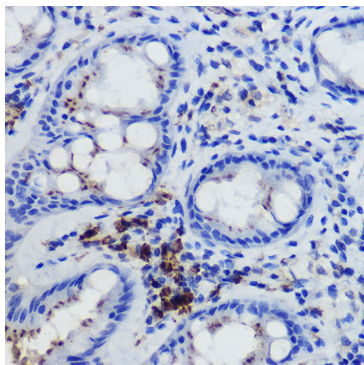
### Storage

Store at -20°C. Avoid freeze / thaw cycles.

Buffer: PBS with 0.05% proclin300, 50% glycerol, pH7.3.

## Validation Data

---



Immunohistochemistry analysis of paraffin-embedded human colon using FPR1 Rabbit pAb (A20455) at dilution of 1:50 (40x lens). Perform high pressure antigen retrieval with 10 mM citrate buffer pH 6.0 before commencing with IHC staining protocol.