

# CASP1 Rabbit pAb

Catalog No.: A20470

## Basic Information

### Observed MW

48kDa

### Calculated MW

46kDa

### Category

Primary antibody

### Applications

ELISA, WB

### Cross-Reactivity

Mouse

## Background

Enables cysteine-type endopeptidase activity. Involved in several processes, including positive regulation of I-kappaB kinase/NF-kappaB signaling; positive regulation of interleukin-1 beta production; and protein autoprocessing. Acts upstream of or within several processes, including membrane hyperpolarization; mitochondrial depolarization; and positive regulation of interleukin-1 alpha production. Located in extracellular region. Part of IPAF inflammasome complex. Is expressed in knee joint and metanephros. Orthologous to human CASP1 (caspase 1).

## Recommended Dilutions

WB 1:500 - 1:1000

## Immunogen Information

### Gene ID

12362

### Swiss Prot

P29452

### Immunogen

A synthetic peptide corresponding to a sequence within amino acids 200-300 of mouse CASP1 (NP\_033937.2).

### Synonyms

ICE; I11bc; CASP1

## Contact

☎ | 400-999-6126

✉ | [cn.market@abclonal.com.cn](mailto:cn.market@abclonal.com.cn)

🌐 | [www.abclonal.com.cn](http://www.abclonal.com.cn)

## Product Information

### Source

Rabbit

### Isotype

IgG

### Purification

Affinity purification

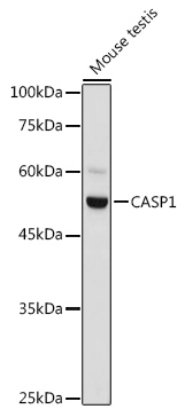
### Storage

Store at -20°C. Avoid freeze / thaw cycles.

Buffer: PBS with 0.05% proclin300, 50% glycerol, pH7.3.

## Validation Data

---



Western blot analysis of extracts of Mouse testis, using CASP1 antibody (A20470) at 1:1000 dilution.  
Secondary antibody: HRP Goat Anti-Rabbit IgG (H+L) (AS014) at 1:10000 dilution.  
Lysates/proteins: 25µg per lane.  
Blocking buffer: 3% nonfat dry milk in TBST.  
Detection: ECL Basic Kit (RM00020).  
Exposure time: 1s.