

IL18 Rabbit pAb

Catalog No.: A20473 **9 Publications**

Basic Information

Observed MW

22kDa/18kDa

Calculated MW

22kDa

Category

Primary antibody

Applications

WB,IHC-P,ELISA

Cross-Reactivity

Human, Mouse, Rat

Background

Enables cytokine activity. Involved in lipid homeostasis; positive regulation of cell differentiation; and positive regulation of cold-induced thermogenesis. Acts upstream of or within several processes, including interleukin-18-mediated signaling pathway; positive regulation of NIK/NF-kappaB signaling; and positive regulation of interferon-gamma production. Located in extracellular space. Is expressed in several structures, including back skin; dorsal aorta; gut; lymphatic system; and reproductive system. Used to study atopic dermatitis. Human ortholog(s) of this gene implicated in several diseases, including Kawasaki disease; allergic rhinitis; autoimmune disease (multiple); biliary atresia; and hepatitis B. Orthologous to human IL18 (interleukin 18).

Recommended Dilutions

WB 1:500 - 1:1000

IHC-P 1:50 - 1:200

ELISA Recommended starting concentration is 1 µg/mL. Please optimize the concentration based on your specific assay requirements.

Immunogen Information

Gene ID

16173

Swiss Prot

P70380

Immunogen

Recombinant protein (or fragment). This information is considered to be commercially sensitive.

Synonyms

Ig1f; IL-18; IL18

Contact

☎ | 400-999-6126

✉ | cn.market@abclonal.com.cn

🌐 | www.abclonal.com.cn

Product Information

Source

Rabbit

Isotype

IgG

Purification

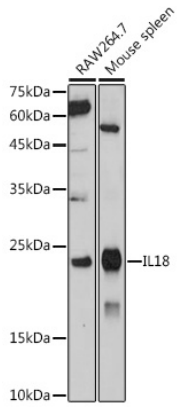
Affinity purification

Storage

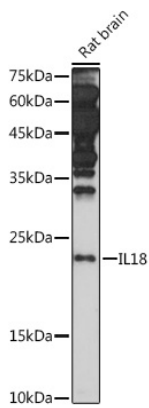
Store at -20°C. Avoid freeze / thaw cycles.

Buffer: PBS containing 50% glycerol, preserved with proclin300 or sodium azide (as specified on the Certificate of Analysis), pH 7.3.

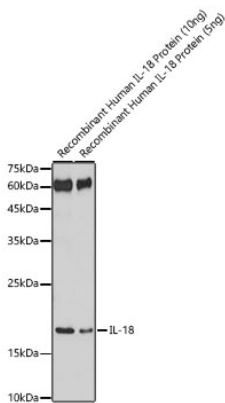
Validation Data



Western blot analysis of various lysates using IL18 Rabbit pAb (A20473) at 1:1000 dilution.
Secondary antibody: HRP-conjugated Goat anti-Rabbit IgG (H+L) (AS014) at 1:10000 dilution.
Lysates/proteins: 25µg per lane.
Blocking buffer: 3% nonfat dry milk in TBST.
Detection: ECL Basic Kit (RM00020).
Exposure time: 30s.

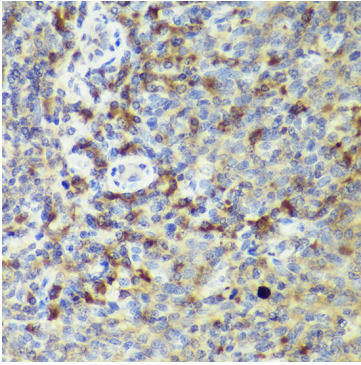


Western blot analysis of lysates from Rat brain, using IL18 Rabbit pAb (A20473) at 1:1000 dilution.
Secondary antibody: HRP-conjugated Goat anti-Rabbit IgG (H+L) (AS014) at 1:10000 dilution.
Lysates/proteins: 25µg per lane.
Blocking buffer: 3% nonfat dry milk in TBST.
Detection: ECL Basic Kit (RM00020).
Exposure time: 180s.

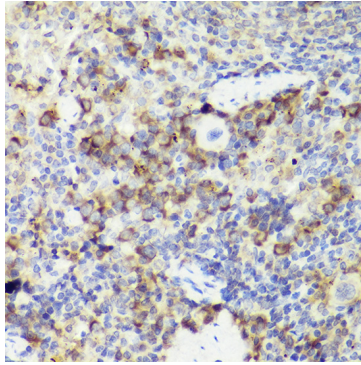


Western blot analysis of Recombinant Human IL-18 Protein (RP00006) using IL18 Rabbit pAb (A20473) at 1:1000 dilution.
Secondary antibody: HRP-conjugated Goat anti-Rabbit IgG (H+L) (AS014) at 1:10000 dilution.
Lysates/proteins: 10ng/5ng per lane.
Blocking buffer: 3% nonfat dry milk in TBST.
Detection: ECL Basic Kit (RM00020).
Exposure time: 180s.

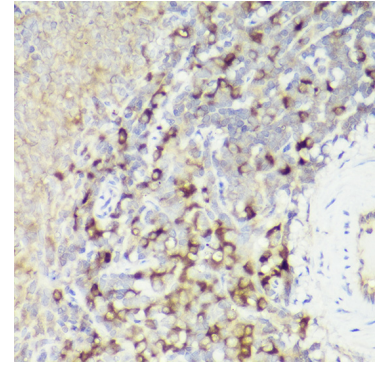
Validation Data



Immunohistochemistry analysis of paraffin-embedded Human tonsil using IL18 Rabbit pAb (A20473) at dilution of 1:50 (40x lens). High pressure antigen retrieval performed with 0.01M Citrate buffer (pH 6.0) prior to IHC staining.



Immunohistochemistry analysis of paraffin-embedded Mouse spleen using IL18 Rabbit pAb (A20473) at dilution of 1:50 (40x lens). High pressure antigen retrieval performed with 0.01M Citrate buffer (pH 6.0) prior to IHC staining.



Immunohistochemistry analysis of paraffin-embedded Rat spleen using IL18 Rabbit pAb (A20473) at dilution of 1:50 (40x lens). High pressure antigen retrieval performed with 0.01M Citrate buffer (pH 6.0) prior to IHC staining.