

# S100A8 Rabbit pAb

Catalog No.: A20474

## Basic Information

### Observed MW

11kDa

### Calculated MW

10kDa

### Category

Primary antibody

### Applications

ELISA, WB, IHC-P

### Cross-Reactivity

Mouse, Rat

## Background

Predicted to enable calcium ion binding activity and calcium-dependent protein binding activity. Acts upstream of or within astrocyte development and positive regulation of peptide secretion. Predicted to be located in cytosol and intermediate filament cytoskeleton.

Predicted to be active in extracellular space. Is expressed in several structures, including bone marrow; extraembryonic component; female reproductive system; and liver. Human ortholog(s) of this gene implicated in myocarditis. Orthologous to human S100A8 (S100 calcium binding protein A8).

## Recommended Dilutions

WB	1:500 - 1:1000
IHC-P	1:50 - 1:200

## Immunogen Information

### Gene ID

20201

### Swiss Prot

P27005

### Immunogen

Recombinant fusion protein containing a sequence corresponding to amino acids 1-89 of mouse S100A8 (NP\_038678.1).

### Synonyms

p8; B8Ag; CFAg; Caga; MRP8; CP-10; 60B8Ag; S100A8

## Contact

☎ | 400-999-6126

✉ | [cn.market@abclonal.com.cn](mailto:cn.market@abclonal.com.cn)

🌐 | [www.abclonal.com.cn](http://www.abclonal.com.cn)

## Product Information

### Source

Rabbit

### Isotype

IgG

### Purification

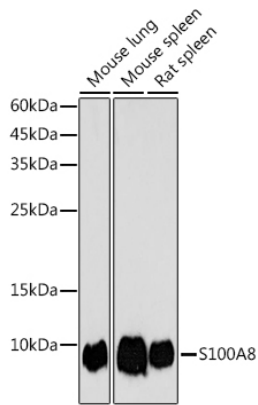
Affinity purification

### Storage

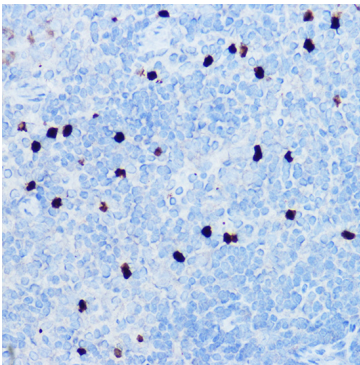
Store at -20°C. Avoid freeze / thaw cycles.

Buffer: PBS with 0.05% proclin300, 50% glycerol, pH7.3.

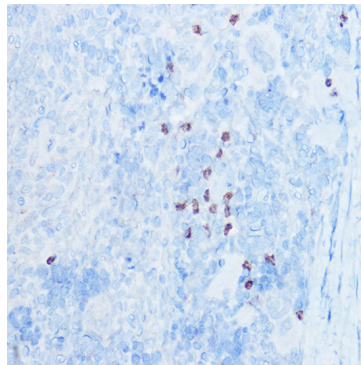
## Validation Data



Western blot analysis of various lysates using S100A8 Rabbit pAb (A20474) at 1:1000 dilution.  
Secondary antibody: HRP Goat Anti-Rabbit IgG (H+L) (AS014) at 1:10000 dilution.  
Lysates/proteins: 25µg per lane.  
Blocking buffer: 3% nonfat dry milk in TBST.  
Detection: ECL Basic Kit (RM00020).  
Exposure time: 180s.



Immunohistochemistry analysis of paraffin-embedded mouse spleen using S100A8 Rabbit pAb (A20474) at dilution of 1:50 (40x lens). Perform high pressure antigen retrieval with 10 mM citrate buffer pH 6.0 before commencing with IHC staining protocol.



Immunohistochemistry analysis of paraffin-embedded rat spleen using S100A8 Rabbit pAb (A20474) at dilution of 1:50 (40x lens). Perform high pressure antigen retrieval with 10 mM citrate buffer pH 6.0 before commencing with IHC staining protocol.