

# CD31/PECAM1 Rabbit pAb

Catalog No.: A20478

## Basic Information

### Observed MW

130kDa

### Calculated MW

76kDa

### Category

Primary antibody

### Applications

ELISA, WB

### Cross-Reactivity

Mouse, Rat

## Background

Enables protein phosphatase binding activity. Involved in several processes, including cellular response to interferon-gamma; negative regulation of GTPase activity; and negative regulation of actin filament polymerization. Located in cell surface and ruffle. Used to study pulmonary hypertension. Biomarker of bacterial pneumonia; orchitis; and osteoarthritis. Human ortholog(s) of this gene implicated in coronary artery disease (multiple); lung non-small cell carcinoma; neuroblastoma; and psoriatic arthritis. Orthologous to human PECAM1 (platelet and endothelial cell adhesion molecule 1).

## Recommended Dilutions

WB 1:500 - 1:1000

## Immunogen Information

### Gene ID

29583

### Swiss Prot

Q3SWT0

### Immunogen

Recombinant fusion protein containing a sequence corresponding to amino acids 611-678 of rat CD31/PECAM1 (NP\_113779.1).

### Synonyms

CD31; Pecam; CD31/PECAM1

## Contact

☎ | 400-999-6126

✉ | [cn.market@abclonal.com.cn](mailto:cn.market@abclonal.com.cn)

🌐 | [www.abclonal.com.cn](http://www.abclonal.com.cn)

## Product Information

### Source

Rabbit

### Isotype

IgG

### Purification

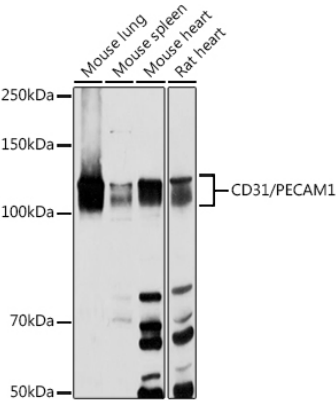
Affinity purification

### Storage

Store at -20°C. Avoid freeze / thaw cycles.

Buffer: PBS with 0.05% proclin300, 50% glycerol, pH7.3.

# Validation Data



Western blot analysis of extracts of various cell lines, using CD31/PECAM1 antibody (A20478) at 1:1000 dilution.  
Secondary antibody: HRP Goat Anti-Rabbit IgG (H+L) (AS014) at 1:10000 dilution.  
Lysates/proteins: 25µg per lane.  
Blocking buffer: 3% nonfat dry milk in TBST.  
Detection: ECL Basic Kit (RM00020).  
Exposure time: 10s.