

NEURL1B Rabbit pAb

Catalog No.: A20479

Basic Information

Observed MW

59kDa

Calculated MW

59kDa

Category

Primary antibody

Applications

ELISA, WB, IHC-P

Cross-Reactivity

Human, Mouse, Rat

Background

Predicted to enable ubiquitin protein ligase activity. Predicted to be involved in ubiquitin-dependent endocytosis. Located in actin cytoskeleton and cytosol.

Recommended Dilutions

WB 1:500 - 1:1000

IHC-P 1:50 - 1:200

Immunogen Information

Gene ID

54492

Swiss Prot

A8MQ27

Immunogen

Recombinant fusion protein containing a sequence corresponding to amino acids 270-440 of human NEURL1B (NP_001136123.1).

Synonyms

neur2; NEURL3; RNF67B; hNeur2; NEURL1B

Contact

☎ | 400-999-6126

✉ | cn.market@abclonal.com.cn

🌐 | www.abclonal.com.cn

Product Information

Source

Rabbit

Isotype

IgG

Purification

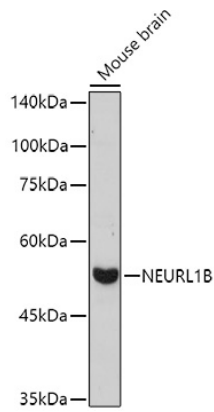
Affinity purification

Storage

Store at -20°C. Avoid freeze / thaw cycles.

Buffer: PBS with 0.01% thimerosal, 50% glycerol, pH7.3.

Validation Data



Western blot analysis of lysates from Mouse brain, using NEURL1B Rabbit pAb (A20479) at 1:1000 dilution.

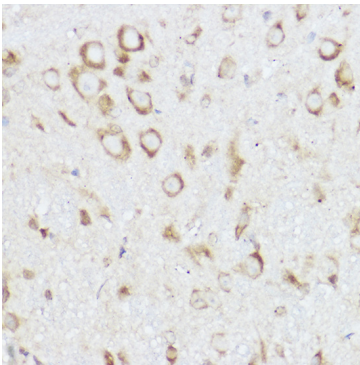
Secondary antibody: HRP Goat Anti-Rabbit IgG (H+L) (AS014) at 1:10000 dilution.

Lysates/proteins: 25µg per lane.

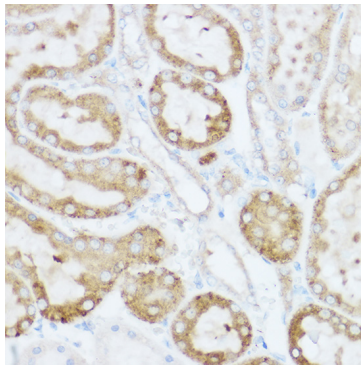
Blocking buffer: 3% nonfat dry milk in TBST.

Detection: ECL Basic Kit (RM00020).

Exposure time: 180s.



Immunohistochemistry analysis of paraffin-embedded mouse spinal cord using NEURL1B Rabbit pAb (A20479) at dilution of 1:100 (40x lens). Perform high pressure antigen retrieval with 10 mM citrate buffer pH 6.0 before commencing with IHC staining protocol.



Immunohistochemistry analysis of paraffin-embedded rat kidney using NEURL1B Rabbit pAb (A20479) at dilution of 1:100 (40x lens). Perform high pressure antigen retrieval with 10 mM citrate buffer pH 6.0 before commencing with IHC staining protocol.