

# CTIP2/BCL11B Rabbit pAb

Catalog No.: A20483

## Basic Information

### Observed MW

120-130kDa

### Calculated MW

96kDa

### Category

Primary antibody

### Applications

ELISA, WB, IHC-P, IF/ICC

### Cross-Reactivity

Human, Mouse, Rat

## Background

This gene encodes a C2H2-type zinc finger protein and is closely related to BCL11A, a gene whose translocation may be associated with B-cell malignancies. Although the specific function of this gene has not been determined, the encoded protein is known to be a transcriptional repressor, and is regulated by the NURD nucleosome remodeling and histone deacetylase complex. Four alternatively spliced transcript variants encoding distinct isoforms have been found for this gene.

## Recommended Dilutions

WB	1:500 - 1:1000
IHC-P	1:50 - 1:200
IF/ICC	1:50 - 1:200

## Immunogen Information

### Gene ID

64919

### Swiss Prot

Q9C0K0

### Immunogen

Recombinant fusion protein containing a sequence corresponding to amino acids 190-310 of human CTIP2/BCL11B (NP\_612808.1).

### Synonyms

ATL1; RIT1; CTIP2; IMD49; CTIP-2; IDDFSTA; SMARCM2; ZNF856B; ATL1-beta; ATL1-alpha; ATL1-delta; ATL1-gamma; hRIT1-alpha; CTIP2/BCL11B

## Contact

☎ | 400-999-6126

✉ | [cn.market@abclonal.com.cn](mailto:cn.market@abclonal.com.cn)

🌐 | [www.abclonal.com.cn](http://www.abclonal.com.cn)

## Product Information

### Source

Rabbit

### Isotype

IgG

### Purification

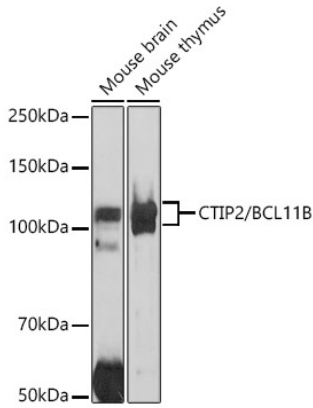
Affinity purification

### Storage

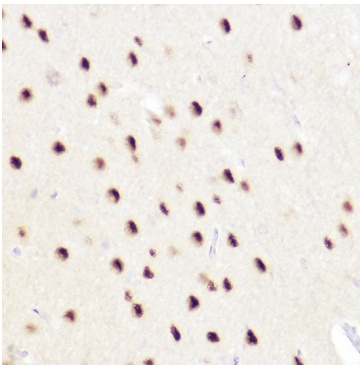
Store at -20°C. Avoid freeze / thaw cycles.

Buffer: PBS with 0.05% proclin300, 50% glycerol, pH7.3.

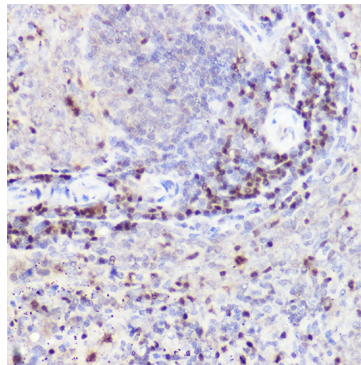
## Validation Data



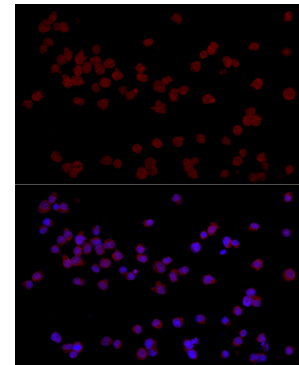
Western blot analysis of various lysates using CTIP2/BCL11B Rabbit pAb (A20483) at 1:1000 dilution. Secondary antibody: HRP Goat Anti-Rabbit IgG (H+L) (AS014) at 1:10000 dilution. Lysates/proteins: 25µg per lane. Blocking buffer: 3% nonfat dry milk in TBST. Detection: ECL Basic Kit (RM00020). Exposure time: 180s.



Immunohistochemistry analysis of paraffin-embedded rat brain using CTIP2/BCL11B Rabbit pAb (A20483) at dilution of 1:50 (40x lens). Perform high pressure antigen retrieval with 10 mM citrate buffer pH 6.0 before commencing with IHC staining protocol.



Immunohistochemistry analysis of paraffin-embedded rat spleen using CTIP2/BCL11B Rabbit pAb (A20483) at dilution of 1:50 (40x lens). Perform high pressure antigen retrieval with 10 mM citrate buffer pH 6.0 before commencing with IHC staining protocol.



Immunofluorescence analysis of Jurkat cells using CTIP2/BCL11B Rabbit pAb (A20483) at dilution of 1:50 (40x lens). Secondary antibody: Cy3 Goat Anti-Rabbit IgG (H+L) (AS007) at 1:500 dilution. Blue: DAPI for nuclear staining.