

METTL8 Rabbit pAb

Catalog No.: A20485

Basic Information

Observed MW

33kDa

Calculated MW

33kDa

Category

Primary antibody

Applications

ELISA, WB

Cross-Reactivity

Human, Mouse, Rat

Background

Enables mRNA methyltransferase activity. Involved in mRNA methylation. Predicted to be located in cytoplasm and nucleus.

Recommended Dilutions

WB 1:500 - 1:1000

Immunogen Information

Gene ID

79828

Swiss Prot

Q9H825

Immunogen

Recombinant fusion protein containing a sequence corresponding to amino acids 1-140 of human METTL8 (NP_001308089.1).

Synonyms

TIP; METTL8

Contact

☎ | 400-999-6126

✉ | cn.market@abclonal.com.cn

🌐 | www.abclonal.com.cn

Product Information

Source

Rabbit

Isotype

IgG

Purification

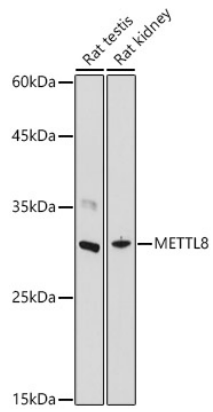
Affinity purification

Storage

Store at -20°C. Avoid freeze / thaw cycles.

Buffer: PBS with 0.01% thimerosal, 50% glycerol, pH7.3.

Validation Data



Western blot analysis of various lysates using METTL8 Rabbit pAb (A20485) at 1:1000 dilution.
Secondary antibody: HRP Goat Anti-Rabbit IgG (H+L) (AS014) at 1:10000 dilution.
Lysates/proteins: 25µg per lane.
Blocking buffer: 3% nonfat dry milk in TBST.
Detection: ECL Basic Kit (RM00020).
Exposure time: 1s.