

# SLFN11 Rabbit pAb

Catalog No.: A20490

## Basic Information

### Observed MW

100kDa

### Calculated MW

103kDa

### Category

Primary antibody

### Applications

ELISA, WB

### Cross-Reactivity

Human

## Background

Enables tRNA binding activity. Involved in several processes, including defense response to virus; negative regulation of G1/S transition of mitotic cell cycle; and replication fork arrest. Located in cytosol; nucleoplasm; and site of DNA damage.

## Recommended Dilutions

WB 1:500 - 1:1000

## Immunogen Information

### Gene ID

91607

### Swiss Prot

Q7Z7L1

### Immunogen

Recombinant fusion protein containing a sequence corresponding to amino acids 132-328 of human SLFN11 (NP\_689483.3).

### Synonyms

SLFN8/9; SLFN11

## Contact

 | 400-999-6126

 | [cn.market@abclonal.com.cn](mailto:cn.market@abclonal.com.cn)

 | [www.abclonal.com.cn](http://www.abclonal.com.cn)

## Product Information

### Source

Rabbit

### Isotype

IgG

### Purification

Affinity purification

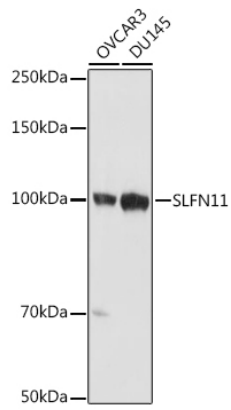
### Storage

Store at -20°C. Avoid freeze / thaw cycles.

Buffer: PBS with 0.05% proclin300, 50% glycerol, pH7.3.

## Validation Data

---



Western blot analysis of extracts of various cell lines, using SLFN11 antibody (A20490) at 1:1000 dilution.  
Secondary antibody: HRP Goat Anti-Rabbit IgG (H+L) (AS014) at 1:10000 dilution.  
Lysates/proteins: 25µg per lane.  
Blocking buffer: 3% nonfat dry milk in TBST.  
Detection: ECL Basic Kit (RM00020).  
Exposure time: 10s.