

ABCA8A Rabbit pAb

Catalog No.: A20496 **1 Publications**

Basic Information

Observed MW

180-250kDa

Calculated MW

184kDa

Category

Primary antibody

Applications

WB,IHC-P,ELISA

Cross-Reactivity

Human, Mouse, Rat

Background

Predicted to enable ABC-type xenobiotic transporter activity and lipid transporter activity. Predicted to be involved in several processes, including cholesterol efflux; positive regulation of cholesterol efflux; and sphingomyelin biosynthetic process. Predicted to be located in endoplasmic reticulum and plasma membrane. Predicted to be active in intracellular membrane-bounded organelle. Is expressed in telencephalon. Orthologous to human ABCA8 (ATP binding cassette subfamily A member 8).

Recommended Dilutions

WB 1:500 - 1:1000

IHC-P 1:50 - 1:200

ELISA Recommended starting concentration is 1 µg/mL. Please optimize the concentration based on your specific assay requirements.

Immunogen Information

Gene ID

217258

Swiss Prot

Q8K442

Immunogen

Recombinant fusion protein containing a sequence corresponding to amino acids 690-828 of mouse ABCA8A (NP_694785.3).

Synonyms

Contact

☎ | 400-999-6126

✉ | cn.market@abclonal.com.cn

🌐 | www.abclonal.com.cn

Product Information

Source

Rabbit

Isotype

IgG

Purification

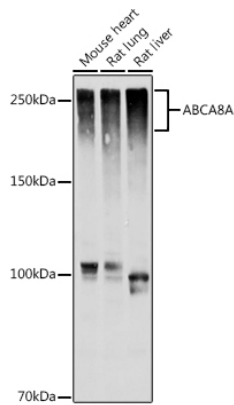
Affinity purification

Storage

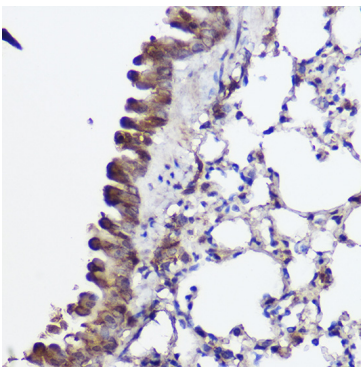
Store at -20°C. Avoid freeze / thaw cycles.

Buffer: PBS with 0.05% proclin300,50% glycerol,pH7.3.

Validation Data



Western blot analysis of various lysates using ABCA8A Rabbit pAb (A20496) at 1:1000 dilution.
Secondary antibody: HRP-conjugated Goat anti-Rabbit IgG (H+L) (AS014) at 1:10000 dilution.
Lysates/proteins: 25µg per lane.
Blocking buffer: 3% nonfat dry milk in TBST.
Detection: ECL Basic Kit (RM00020).
Exposure time: 10s.



Immunohistochemistry analysis of paraffin-embedded Mouse lung using ABCA8A Rabbit pAb (A20496) at dilution of 1:100 (40x lens). High pressure antigen retrieval performed with 0.01M Citrate Buffer (pH 6.0) prior to IHC staining.