

TET3 Rabbit pAb

Catalog No.: A20501

Basic Information

Observed MW

230kDa

Calculated MW

195kDa

Category

Primary antibody

Applications

ELISA, WB

Cross-Reactivity

Human, Mouse, Rat

Background

Enables methylcytosine dioxygenase activity. Involved in DNA demethylation of male pronucleus. Acts upstream of or within DNA demethylation. Located in cytoplasm; female pronucleus; and male pronucleus. Is expressed in several structures, including central nervous system; early conceptus; future brain; and genitourinary system. Orthologous to human TET3 (tet methylcytosine dioxygenase 3).

Recommended Dilutions

WB 1:500 - 1:1000

Immunogen Information

Gene ID

194388

Swiss Prot

Q8BG87

Immunogen

Recombinant fusion protein containing a sequence corresponding to amino acids 1-285 of mouse TET3 (Q8BG87).

Synonyms

B430006D22Rik; D230004J03Rik; TET3

Contact

☎ | 400-999-6126

✉ | cn.market@abclonal.com.cn

🌐 | www.abclonal.com.cn

Product Information

Source

Rabbit

Isotype

IgG

Purification

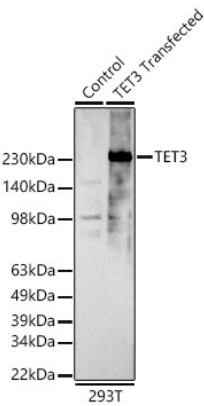
Affinity purification

Storage

Store at -20°C. Avoid freeze / thaw cycles.

Buffer: PBS with 0.05% proclin300, 50% glycerol, pH7.3.

Validation Data



Western blot analysis of lysates from wild type (WT) and 293T cells transfected with TET3 using TET3 Rabbit pAb(A20501) at 1:1000 dilution.
Secondary antibody: HRP Goat Anti-Rabbit IgG (H+L) (AS014) at 1:10000 dilution.
Lysates/proteins: 25µg per lane.
Blocking buffer: 3% nonfat dry milk in TBST.
Detection: ECL Enhanced Kit (RM00021).
Exposure time: 90s.