

INTS8 Rabbit pAb

Catalog No.: A20513

Basic Information

Observed MW

90-115kDa

Calculated MW

113kDa

Category

Primary antibody

Applications

WB, ELISA

Cross-Reactivity

Human, Mouse

Background

This gene encodes a subunit of the Integrator complex which is involved in the cleavage of small nuclear RNAs U1 and U2 within the nucleus. The encoded protein associates with RNA polymerase II and is recruited to the U1 and U2 small nuclear RNA genes. Alternative splicing results in multiple transcript variants.

Recommended Dilutions

WB 1:500 - 1:1000

ELISA Recommended starting concentration is 1 µg/mL. Please optimize the concentration based on your specific assay requirements.

Immunogen Information

Gene ID

55656

Swiss Prot

Q75QN2

Immunogen

Recombinant protein (or fragment). This information is considered to be commercially sensitive.

Synonyms

INT8; NEDCHS; C8orf52; INTS8

Contact

 | 400-999-6126

 | cn.market@abclonal.com.cn

 | www.abclonal.com.cn

Product Information

Source

Rabbit

Isotype

IgG

Purification

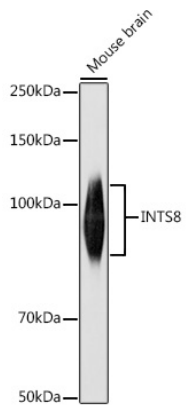
Affinity purification

Storage

Store at -20°C. Avoid freeze / thaw cycles.

Buffer: PBS containing 50% glycerol, preserved with proclin300 or sodium azide (as specified on the Certificate of Analysis), pH 7.3.

Validation Data



Western blot analysis of lysates from Mouse brain, using INTS8 Rabbit pAb (A20513) at 1:1000 dilution.
Secondary antibody: HRP-conjugated Goat anti-Rabbit IgG (H+L) (AS014) at 1:10000 dilution.
Lysates/proteins: 25 μ g per lane.
Blocking buffer: 3% nonfat dry milk in TBST.
Detection: ECL Basic Kit (RM00020).
Exposure time: 1s.