

TARBP1 Rabbit pAb

Catalog No.: A20524

Basic Information

Observed MW

182kDa

Calculated MW

182kDa

Category

Primary antibody

Applications

WB, ELISA

Cross-Reactivity

Human

Background

HIV-1, the causative agent of acquired immunodeficiency syndrome (AIDS), contains an RNA genome that produces a chromosomally integrated DNA during the replicative cycle. Activation of HIV-1 gene expression by the transactivator Tat is dependent on an RNA regulatory element (TAR) located downstream of the transcription initiation site. This element forms a stable stem-loop structure and can be bound by either the protein encoded by this gene or by RNA polymerase II. This protein may act to disengage RNA polymerase II from TAR during transcriptional elongation. Alternatively spliced transcripts of this gene may exist, but their full-length natures have not been determined.

Recommended Dilutions

WB 1:500 - 1:1000

ELISA Recommended starting concentration is 1 µg/mL. Please optimize the concentration based on your specific assay requirements.

Immunogen Information

Gene ID

6894

Swiss Prot

Q13395

Immunogen

Recombinant protein (or fragment). This information is considered to be commercially sensitive.

Synonyms

TRM3; TRMT3; TRP185; TRP-185; TARBP1

Contact

☎ | 400-999-6126

✉ | cn.market@abclonal.com.cn

🌐 | www.abclonal.com.cn

Product Information

Source

Rabbit

Isotype

IgG

Purification

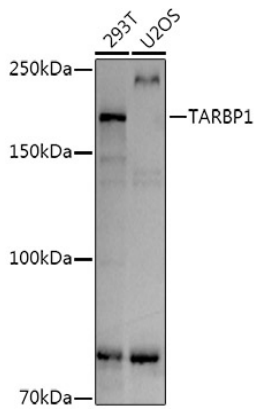
Affinity purification

Storage

Store at -20°C. Avoid freeze / thaw cycles.

Buffer: PBS containing 50% glycerol, preserved with proclin300 or sodium azide (as specified on the Certificate of Analysis), pH 7.3.

Validation Data



Western blot analysis of various lysates using TARBP1 Rabbit pAb (A20524) at 1:1000 dilution. Secondary antibody: HRP-conjugated Goat anti-Rabbit IgG (H+L) (AS014) at 1:10000 dilution. Lysates/proteins: 25µg per lane. Blocking buffer: 3% nonfat dry milk in TBST. Detection: ECL Basic Kit (RM00020). Exposure time: 10s.