

UFL1 Rabbit pAb

Catalog No.: A20528

Basic Information

Observed MW

90 kDa

Calculated MW

90 kDa

Category

Primary antibody

Applications

WB,IF/ICC,IHC-P,ELISA

Cross-Reactivity

Human, Mouse, Rat

Background

Enables UFM1 ligase activity and protein kinase binding activity. Involved in several processes, including cellular protein modification process; regulation of signal transduction; and reticulophagy. Acts upstream of or within several processes, including positive regulation of cell population proliferation; regulation of proteasomal ubiquitin-dependent protein catabolic process; and response to endoplasmic reticulum stress. Located in endoplasmic reticulum membrane; nucleus; and site of double-strand break. Part of protein-containing complex.

Recommended Dilutions

WB 1:3000 - 1:9000

IF/ICC 1:50 - 1:200

IHC-P 1:200 - 1:800

ELISA Recommended starting concentration is 1 µg/mL. Please optimize the concentration based on your specific assay requirements.

Immunogen Information

Gene ID

23376

Swiss Prot

O94874

Immunogen

Recombinant protein (or fragment). This information is considered to be commercially sensitive.

Synonyms

NLBP; RCAD; Maxer; KIAA0776; UFL1

Contact

☎ | 400-999-6126

✉ | cn.market@abclonal.com.cn

🌐 | www.abclonal.com.cn

Product Information

Source

Rabbit

Isotype

IgG

Purification

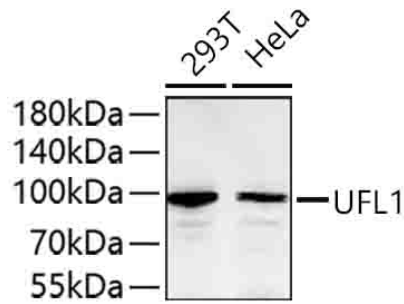
Affinity purification

Storage

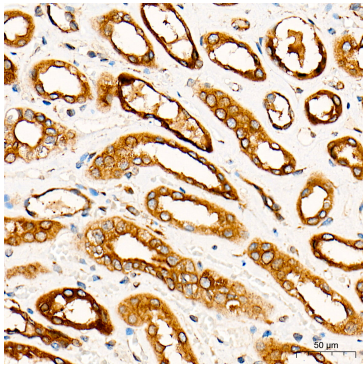
Store at -20°C. Avoid freeze / thaw cycles.

Buffer: PBS with 0.09% Sodium azide, 50% glycerol, pH7.3.

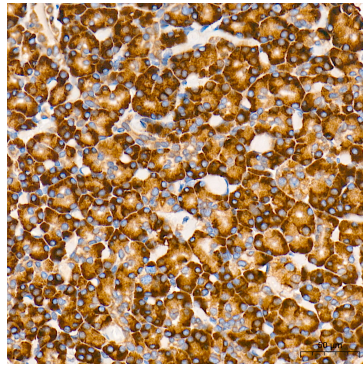
Validation Data



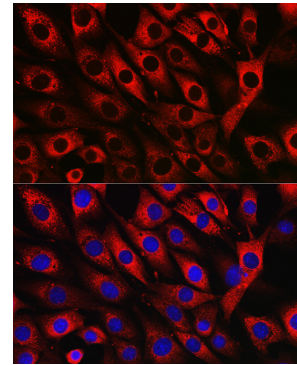
Western blot analysis of various lysates using UFL1 Rabbit pAb (A20528) at 1:3000 dilution incubated overnight at 4°C.
Secondary antibody: HRP-conjugated Goat anti-Rabbit IgG (H+L) (AS014) at 1:10000 dilution.
Lysates/proteins: 25 µg per lane.
Blocking buffer: 3% nonfat dry milk in TBST.
Detection: ECL Basic Kit (RM00020).
Exposure time: 45 s.



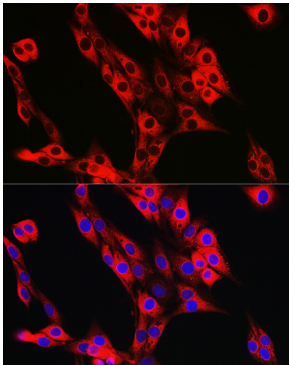
Immunohistochemistry analysis of paraffin-embedded Human kidney tissue using UFL1 Rabbit pAb (A20528) at a dilution of 1:300 (40x lens). High pressure antigen retrieval performed with 0.01M Tris-EDTA Buffer (pH 9.0) prior to IHC staining.



Immunohistochemistry analysis of paraffin-embedded Human pancreas tissue using UFL1 Rabbit pAb (A20528) at a dilution of 1:300 (40x lens). High pressure antigen retrieval performed with 0.01M Tris-EDTA Buffer (pH 9.0) prior to IHC staining.



Immunofluorescence analysis of NIH/3T3 cells using UFL1 Rabbit pAb (A20528) at dilution of 1:50 (40x lens). Secondary antibody: Cy3-conjugated Goat anti-Rabbit IgG (H+L) (AS007) at 1:500 dilution. Blue: DAPI for nuclear staining.



Immunofluorescence analysis of PC-12 cells using UFL1 Rabbit pAb (A20528) at dilution of 1:50 (40x lens). Secondary antibody: Cy3-conjugated Goat anti-Rabbit IgG (H+L) (AS007) at 1:500 dilution. Blue: DAPI for nuclear staining.