

# LAGE3 Rabbit pAb

Catalog No.: A20546

## Basic Information

### Observed MW

17kDa

### Calculated MW

15kDa

### Category

Primary antibody

### Applications

ELISA, WB

### Cross-Reactivity

Human

## Background

This gene belongs to the ESO/LAGE gene family, members of which are clustered together on chromosome Xq28, and have similar exon-intron structures. Unlike the other family members which are normally expressed only in testis and activated in a wide range of human tumors, this gene is ubiquitously expressed in somatic tissues. The latter, combined with the finding that it is highly conserved in mouse and rat, suggests that the encoded protein is functionally important. An intronless pseudogene with high sequence similarity to this gene is located on chromosome 9.

## Recommended Dilutions

WB 1:500 - 1:1000

## Immunogen Information

### Gene ID

8270

### Swiss Prot

Q14657

### Immunogen

Recombinant fusion protein containing a sequence corresponding to amino acids 1-143 of human LAGE3 (NP\_006005.2).

### Synonyms

CVG5; ESO3; Pcc1; ITBA2; GAMOS2; DXS9879E; DXS9951E; LAGE3

## Contact

 | 400-999-6126

 | [cn.market@abclonal.com.cn](mailto:cn.market@abclonal.com.cn)

 | [www.abclonal.com.cn](http://www.abclonal.com.cn)

## Product Information

### Source

Rabbit

### Isotype

IgG

### Purification

Affinity purification

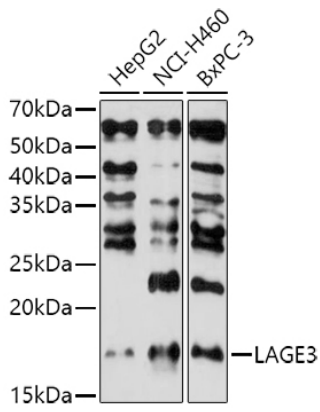
### Storage

Store at -20°C. Avoid freeze / thaw cycles.

Buffer: PBS with 0.01% thimerosal, 50% glycerol, pH7.3.

## Validation Data

---



Western blot analysis of various lysates using LAGE3 Rabbit pAb (A20546) at 1:1000 dilution.  
Secondary antibody: HRP Goat Anti-Rabbit IgG (H+L) (AS014) at 1:10000 dilution.  
Lysates/proteins: 25µg per lane.  
Blocking buffer: 3% nonfat dry milk in TBST.  
Detection: ECL Basic Kit (RM00020).  
Exposure time: 180s.