

CD68 Rabbit pAb

Catalog No.: A20555

Basic Information

Observed MW

80-140 kDa

Calculated MW

35 kDa

Category

Primary antibody

Applications

WB, IF/ICC, IF-P, IHC-P, ELISA

Cross-Reactivity

Human, Mouse, Rat

Background

Involved in several processes, including cellular response to lipopolysaccharide; cellular response to oxidised low-density lipoprotein particle stimulus; and negative regulation of dendritic cell antigen processing and presentation. Acts upstream of or within aging and cellular response to organic substance. Located in lysosome and plasma membrane. Is expressed in several structures, including central nervous system; embryo mesenchyme; heart blood vessel; liver; and spleen. Orthologous to human CD68 (CD68 molecule).

Recommended Dilutions

WB	1:500 - 1:2000
IF/ICC	1:50 - 1:400
IF-P	1:100 - 1:400
IHC-P	1:1000 - 1:2000
ELISA	Recommended starting concentration is 1 µg/mL. Please optimize the concentration based on your specific assay requirements.

Contact

	400-999-6126
	cn.market@abclonal.com.cn
	www.abclonal.com.cn

Immunogen Information

Gene ID

12514

Swiss Prot

P31996

Immunogen

This information is considered to be commercially sensitive.

Synonyms

Lamp4; gp110; Scard1; CD68

Product Information

Source

Rabbit

Isotype

IgG

Purification

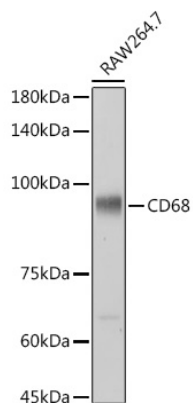
Affinity purification

Storage

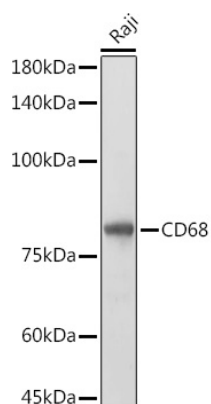
Store at -20°C. Avoid freeze / thaw cycles.

Buffer: PBS containing 50% glycerol, preserved with proclin300 or sodium azide (as specified on the Certificate of Analysis), pH 7.3.

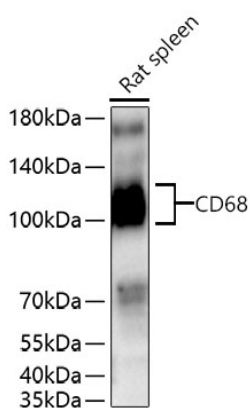
Validation Data



Western blot analysis of lysates from RAW264.7 cells, using CD68 Rabbit pAb (A20555) at 1:1000 dilution.
Secondary antibody: HRP-conjugated Goat anti-Rabbit IgG (H+L) (AS014) at 1:10000 dilution.
Lysates/proteins: 25µg per lane.
Blocking buffer: 3% nonfat dry milk in TBST.
Detection: ECL Basic Kit (RM00020).
Exposure time: 1s.

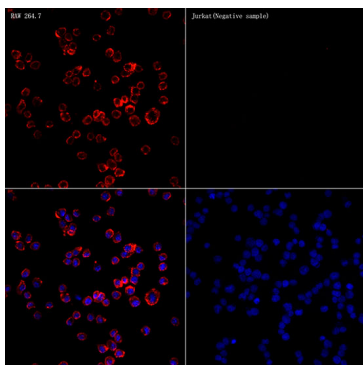


Western blot analysis of lysates from Raji cells, using CD68 Rabbit pAb (A20555) at 1:1000 dilution.
Secondary antibody: HRP-conjugated Goat anti-Rabbit IgG (H+L) (AS014) at 1:10000 dilution.
Lysates/proteins: 25µg per lane.
Blocking buffer: 3% nonfat dry milk in TBST.
Detection: ECL Basic Kit (RM00020).
Exposure time: 10s.

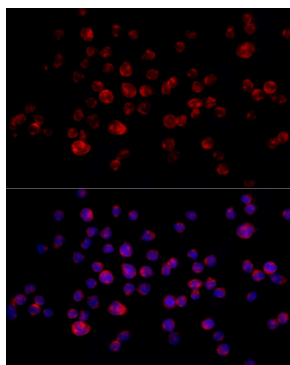


Western blot analysis of lysates from Rat spleen using CD68 Rabbit pAb (A20555) at 1:1000 dilution incubated overnight at 4°C.
Secondary antibody: HRP-conjugated Goat anti-Rabbit IgG (H+L) (AS014) at 1:10000 dilution.
Lysates/proteins: 25 µg per lane.
Blocking buffer: 3% nonfat dry milk in TBST.
Detection: ECL Basic Kit (RM00020).
Exposure time: 90 s.

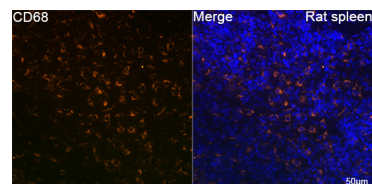
Validation Data



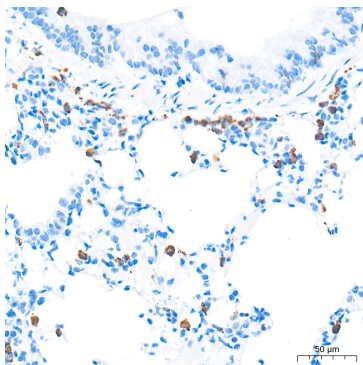
Immunofluorescence analysis of RAW 264.7 and Jurkat(Negative sample) cells using CD68 Rabbit pAb (A20555) at dilution of 1:50 (40x lens). Secondary antibody: Cy3-conjugated Goat anti-Rabbit IgG (H+L) (AS007) at 1:500 dilution. Blue: DAPI for nuclear staining.



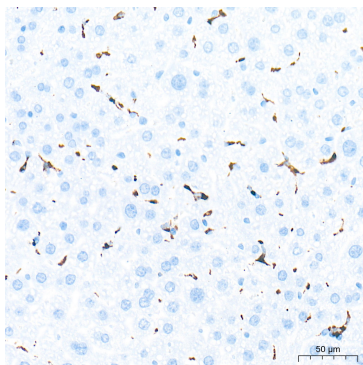
Immunofluorescence analysis of THP-1 cells using CD68 Rabbit pAb (A20555) at dilution of 1:50 (40x lens). Secondary antibody: Cy3-conjugated Goat anti-Rabbit IgG (H+L) (AS007) at 1:500 dilution. Blue: DAPI for nuclear staining.



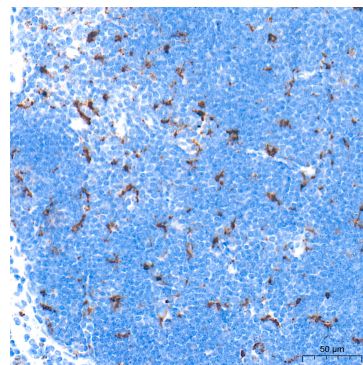
Confocal imaging of paraffin-embedded Rat spleen tissue using CD68 Rabbit pAb (A20555, dilution 1:200) followed by a further incubation with Cy3-conjugated Goat anti-Rabbit IgG (H+L) (AS007, dilution 1:500) (Red). DAPI was used for nuclear staining (Blue). High pressure antigen retrieval performed with 0.01M Citrate Buffer (pH 6.0) prior to IF staining. Objective: 40x.



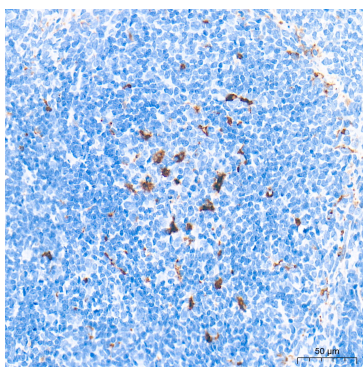
Immunohistochemistry analysis of paraffin-embedded Mouse lung tissue using CD68 Rabbit pAb (A20555) at a dilution of 1:1000 (40x lens). High pressure antigen retrieval performed with 0.01M Tris-EDTA Buffer (pH 9.0) prior to IHC staining.



Immunohistochemistry analysis of paraffin-embedded Mouse liver tissue using CD68 Rabbit pAb (A20555) at a dilution of 1:1000 (40x lens). High pressure antigen retrieval performed with 0.01M Tris-EDTA Buffer (pH 9.0) prior to IHC staining.



Immunohistochemistry analysis of paraffin-embedded Mouse thymus tissue using CD68 Rabbit pAb (A20555) at a dilution of 1:1000 (40x lens). High pressure antigen retrieval performed with 0.01M Tris-EDTA Buffer (pH 9.0) prior to IHC staining.



Immunohistochemistry analysis of paraffin-embedded Rat spleen tissue using CD68 Rabbit pAb (A20555) at a dilution of 1:1000 (40x lens). High pressure antigen retrieval performed with 0.01M Tris-EDTA Buffer (pH 9.0) prior to IHC staining.