

SARM1 Rabbit pAb

Catalog No.: A20556

Basic Information

Observed MW

73kDa

Calculated MW

79kDa

Category

Primary antibody

Applications

WB,IP,ELISA

Cross-Reactivity

Human

Background

Enables NAD⁺ nucleotidase, cyclic ADP-ribose generating and identical protein binding activity. Involved in NAD catabolic process; positive regulation of neuron death; and response to axon injury. Located in mitochondrion.

Recommended Dilutions

WB 1:500 - 1:1000

IP 0.5µg-4µg antibody for
200µg-400µg extracts of
whole cells

ELISA Recommended starting
concentration is 1 µg/mL.
Please optimize the
concentration based on
your specific assay
requirements.

Immunogen Information

Gene ID

23098

Swiss Prot

Q6SZW1

Immunogen

Synthetic peptide. This information is considered to be commercially sensitive.

Synonyms

SARM; HsTIR; SAMD2; hSARM1; MyD88-5; SARM1

Contact

☎ | 400-999-6126

✉ | cn.market@abclonal.com.cn

🌐 | www.abclonal.com.cn

Product Information

Source

Rabbit

Isotype

IgG

Purification

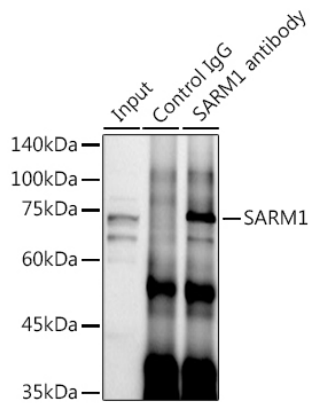
Affinity purification

Storage

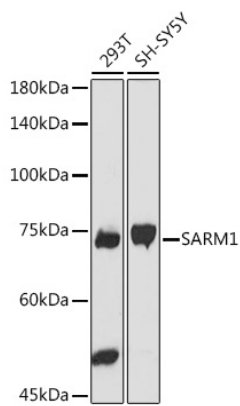
Store at -20°C. Avoid freeze / thaw cycles.

Buffer: PBS containing 50% glycerol, preserved with proclin300 or sodium azide (as specified on the Certificate of Analysis), pH 7.3.

Validation Data



Immunoprecipitation analysis of 300 μ g extracts of SH-SY5Y cells using 3 μ g SARM1 antibody (A20556). Western blot was performed from the immunoprecipitate using SARM1 antibody (A20556) at a dilution of 1:1000.



Western blot analysis of various lysates using SARM1 Rabbit pAb (A20556) at 1:1000 dilution. Secondary antibody: HRP-conjugated Goat anti-Rabbit IgG (H+L) (AS014) at 1:10000 dilution. Lysates/proteins: 25 μ g per lane. Blocking buffer: 3% nonfat dry milk in TBST. Detection: ECL Basic Kit (RM00020). Exposure time: 90s.