

RRP8 Rabbit pAb

Catalog No.: A20557

Basic Information

Observed MW

58kDa

Calculated MW

51kDa

Category

Primary antibody

Applications

ELISA, WB

Cross-Reactivity

Human, Mouse, Rat

Background

Enables methylated histone binding activity. Involved in several processes, including cellular response to glucose starvation; intrinsic apoptotic signaling pathway by p53 class mediator; and regulation of gene expression. Located in several cellular components, including cytosol; nuclear lumen; and rDNA heterochromatin. Part of chromatin silencing complex.

Recommended Dilutions

WB 1:500 - 1:1000

Immunogen Information

Gene ID

23378

Swiss Prot

O43159

Immunogen

A synthetic peptide corresponding to a sequence within amino acids 100-200 of human RRP8 (NP_056139.1).

Synonyms

NML; KIAA0409; RRP8

Contact

☎ | 400-999-6126

✉ | cn.market@abclonal.com.cn

🌐 | www.abclonal.com.cn

Product Information

Source

Rabbit

Isotype

IgG

Purification

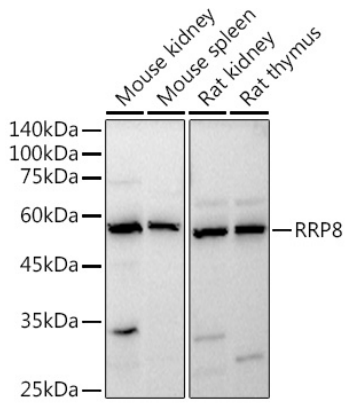
Affinity purification

Storage

Store at -20°C. Avoid freeze / thaw cycles.

Buffer: PBS with 0.05% proclin300, 50% glycerol, pH7.3.

Validation Data



Western blot analysis of extracts of various cell lines, using RRP8 antibody (A20557) at 1:1000 dilution.
Secondary antibody: HRP Goat Anti-Rabbit IgG (H+L) (AS014) at 1:10000 dilution.
Lysates/proteins: 25µg per lane.
Blocking buffer: 3% nonfat dry milk in TBST.
Detection: ECL Basic Kit (RM00020).
Exposure time: 30s.