

Cyclin B1 Rabbit pAb

Catalog No.: A2056

34 Publications

Basic Information

Observed MW

55kDa

Calculated MW

48kDa

Category

Primary antibody

Applications

ELISA, WB, IF/ICC

Cross-Reactivity

Human, Mouse, Rat

Background

The protein encoded by this gene is a regulatory protein involved in mitosis. The gene product complexes with p34(cdc2) to form the maturation-promoting factor (MPF). The encoded protein is necessary for proper control of the G2/M transition phase of the cell cycle.

Recommended Dilutions

WB 1:100 - 1:500

IF/ICC 1:50 - 1:200

Immunogen Information

Gene ID

891

Swiss Prot

P14635

Immunogen

A synthetic peptide corresponding to a sequence within amino acids 334-433 of human Cyclin B1 (NP_114172.1).

Synonyms

CCNB; Cyclin B1

Contact

☎ | 400-999-6126

✉ | cn.market@abclonal.com.cn

🌐 | www.abclonal.com.cn

Product Information

Source

Rabbit

Isotype

IgG

Purification

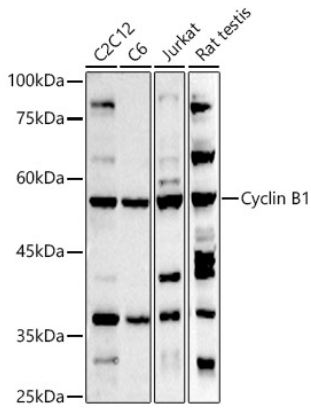
Affinity purification

Storage

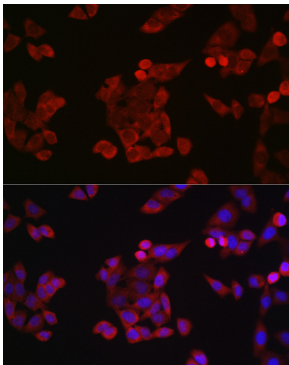
Store at -20°C. Avoid freeze / thaw cycles.

Buffer: PBS with 0.05% proclin300, 50% glycerol, pH7.3.

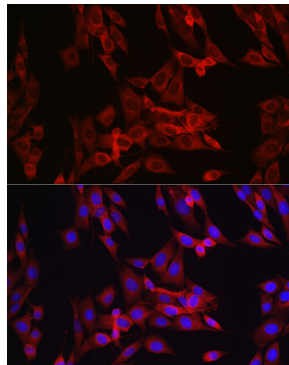
Validation Data



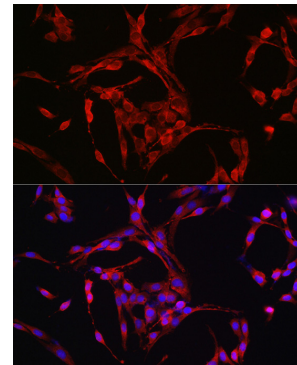
Western blot analysis of extracts of various cell lines, using Cyclin B1 antibody (A2056) at 1:500 dilution. Secondary antibody: HRP Goat Anti-Rabbit IgG (H+L) (AS014) at 1:10000 dilution. Lysates/proteins: 25µg per lane. Blocking buffer: 3% nonfat dry milk in TBST. Detection: ECL Basic Kit (RM00020). Exposure time: 180s.



Immunofluorescence analysis of HeLa cells using Cyclin B1 Rabbit pAb (A2056) at dilution of 1:100 (40x lens). Blue: DAPI for nuclear staining.



Immunofluorescence analysis of NIH/3T3 cells using Cyclin B1 Rabbit pAb (A2056) at dilution of 1:100 (40x lens). Blue: DAPI for nuclear staining.



Immunofluorescence analysis of PC-12 cells using Cyclin B1 Rabbit pAb (A2056) at dilution of 1:100 (40x lens). Blue: DAPI for nuclear staining.