

# SELENOK Rabbit pAb

Catalog No.: A20560 **3 Publications**

## Basic Information

**Observed MW**

11kDa

**Calculated MW**

11kDa

**Category**

Primary antibody

**Applications**

ELISA,WB

**Cross-Reactivity**

Mouse

## Background

The protein encoded by this gene belongs to the selenoprotein K family. It is a transmembrane protein that is localized in the endoplasmic reticulum (ER), and is involved in ER-associated degradation (ERAD) of misfolded, glycosylated proteins. It also has a role in the protection of cells from ER stress-induced apoptosis. Knockout studies in mice show the importance of this gene in promoting Ca(2+) flux in immune cells and mounting effective immune response. This protein is a selenoprotein, containing the rare amino acid selenocysteine (Sec). Sec is encoded by the UGA codon, which normally signals translation termination. The 3' UTRs of selenoprotein mRNAs contain a conserved stem-loop structure, designated the Sec insertion sequence (SECIS) element, that is necessary for the recognition of UGA as a Sec codon, rather than as a stop signal. Pseudogenes of this locus have been identified on chromosomes 6 and 19.

## Recommended Dilutions

WB 1:500 - 1:1000

## Immunogen Information

**Gene ID**

58515

**Swiss Prot**

Q9Y6D0

**Immunogen**

A synthetic peptide corresponding to a sequence within amino acids 1-94 of human SELENOK (NP\_067060.2).

**Synonyms**

SELK; HSPC030; HSPC297; SELENOK

## Contact

 | 400-999-6126 | [cn.market@abclonal.com.cn](mailto:cn.market@abclonal.com.cn) | [www.abclonal.com.cn](http://www.abclonal.com.cn)

## Product Information

**Source**

Rabbit

**Isotype**

IgG

**Purification**

Affinity purification

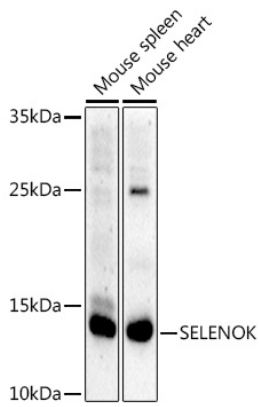
**Storage**

Store at -20°C. Avoid freeze / thaw cycles.

Buffer: PBS with 0.05% proclin300,50% glycerol,pH7.3.

## Validation Data

---



Western blot analysis of extracts of various cell lines, using SELENOK antibody (A20560) at 1:1000 dilution.

Secondary antibody: HRP Goat Anti-Rabbit IgG (H+L) (AS014) at 1:10000 dilution.

Lysates/proteins: 25µg per lane.

Blocking buffer: 3% nonfat dry milk in TBST.

Detection: ECL Basic Kit (RM00020).

Exposure time: 180s.