

TOM1L2 Rabbit pAb

Catalog No.: A20563

Basic Information

Observed MW

60kDa

Calculated MW

56kDa

Category

Primary antibody

Applications

WB, ELISA

Cross-Reactivity

Human, Mouse, Rat

Background

This gene belongs to a small gene family whose members have an N-terminal VHS domain followed by a GAT domain; domains which typically participate in vesicular trafficking. The canonical protein encoded by this gene also has a C-terminal clathrin binding motif. This protein has been shown to interact with Tollip, clathrin and ubiquitin and is thought to play a role in endosomal sorting. This gene resides in the 3.7 Mb deletion of chromosome region 17p11.2 that is associated with Smith-Magenis syndrome. Alternative splicing results in multiple transcript variants encoding distinct proteins.

Recommended Dilutions

WB 1:500 - 1:1000

ELISA Recommended starting concentration is 1 µg/mL. Please optimize the concentration based on your specific assay requirements.

Immunogen Information

Gene ID

146691

Swiss Prot

Q6ZVM7

Immunogen

Recombinant protein (or fragment). This information is considered to be commercially sensitive.

Synonyms

TOM1L2

Contact

☎ | 400-999-6126

✉ | cn.market@abclonal.com.cn

🌐 | www.abclonal.com.cn

Product Information

Source

Rabbit

Isotype

IgG

Purification

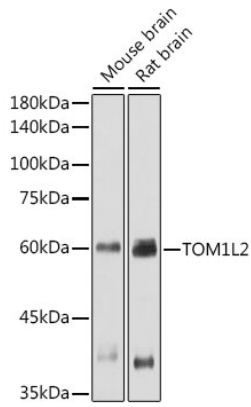
Affinity purification

Storage

Store at -20°C. Avoid freeze / thaw cycles.

Buffer: PBS containing 50% glycerol, preserved with proclin300 or sodium azide (as specified on the Certificate of Analysis), pH 7.3.

Validation Data



Western blot analysis of various lysates using TOM1L2 Rabbit pAb (A20563) at 1:1000 dilution.
Secondary antibody: HRP-conjugated Goat anti-Rabbit IgG (H+L) (AS014) at 1:10000 dilution.
Lysates/proteins: 25 μ g per lane.
Blocking buffer: 3% nonfat dry milk in TBST.
Detection: ECL Basic Kit (RM00020).
Exposure time: 30s.