

OsWRKY28 Rabbit pAb

Catalog No.: A20572

Basic Information

Observed MW

52kDa

Calculated MW

44kDa

Category

Primary antibody

Applications

ELISA, WB

Cross-Reactivity

Oryza sativa

Background

This gene is mainly expressed in roots before flowering (RPKM288.3) and leaves after flowering (RPKM21.0). Modulates plant innate immunity against *X.oryzae pv. oryzae* (Xoo) (PMID: 21961049). Regulates negatively the basal defense responses to the compatible fungus *M.oryzae* (PMID: 23462973, PMID: 21726398).

Recommended Dilutions

WB 1:500 - 1:2000

Immunogen Information

Gene ID

4341678

Swiss Prot

Immunogen

Recombinant fusion protein containing a sequence corresponding to amino acids 50-240 of *Oryza sativa* OsWRKY28. (Q0DAJ3).

Synonyms

OsWRKY28

Contact

 | 400-999-6126

 | cn.market@abclonal.com.cn

 | www.abclonal.com.cn

Product Information

Source

Rabbit

Isotype

IgG

Purification

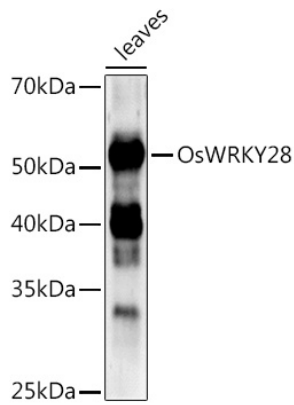
Affinity purification

Storage

Store at -20°C. Avoid freeze / thaw cycles.

Buffer: PBS with 0.01% thimerosal, 50% glycerol, pH7.3.

Validation Data



Western blot analysis of extracts of various tissues from the japonica rice (*Oryza sativa* L.) variety Zhonghua 11, using OsWRKY28 Rabbit pAb (A20572) at 1:1000 dilution.
Secondary antibody: HRP Goat Anti-Rabbit IgG (H+L) (AS014) at 1:10000 dilution.
Lysates/proteins: 25µg per lane.
Blocking buffer: 3% nonfat dry milk in TBST.
Detection: ECL Enhanced Kit (RM00021).
Exposure time: 120s.