

# CSA Rabbit pAb

Catalog No.: A20577

## Basic Information

### Observed MW

50kDa

### Calculated MW

36kDa

### Category

Primary antibody

### Applications

ELISA, WB

### Cross-Reactivity

Oryza sativa

## Background

Transcription factor required for sugar partitioning from leaves to anthers during male reproductive development. Required for the production of functional pollen grains. Binds to the promoter of the anther-specific sugar transporter MST8 and regulates its expression. Regulates the expression of genes involved in sugar partitioning in flower, such as the sugar transporter SUT3, the invertase INV4, the UDP-glucose pyrophosphorylase UGP2 and the starch synthase WAXY

## Recommended Dilutions

WB 1:500 - 1:2000

## Immunogen Information

### Gene ID

4325181

### Swiss Prot

### Immunogen

Recombinant fusion protein containing a sequence corresponding to amino acids 234-338 of Oryza sativa CSA. (Q5NBM8).

### Synonyms

P0038F12.1; CSA

## Contact

☎ | 400-999-6126

✉ | [cn.market@abclonal.com.cn](mailto:cn.market@abclonal.com.cn)

🌐 | [www.abclonal.com.cn](http://www.abclonal.com.cn)

## Product Information

### Source

Rabbit

### Isotype

IgG

### Purification

Affinity purification

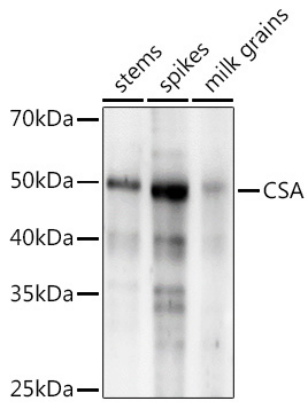
### Storage

Store at -20°C. Avoid freeze / thaw cycles.

Buffer: PBS with 0.01% thimerosal, 50% glycerol, pH7.3.

## Validation Data

---



Western blot analysis of extracts of various tissues from the japonica rice (*Oryza sativa* L.) variety Zhonghua 11, using CSA Rabbit pAb (A20577) at 1:1000 dilution.

Secondary antibody: HRP Goat Anti-Rabbit IgG (H+L) (AS014) at 1:10000 dilution.

Lysates/proteins: 25µg per lane.

Blocking buffer: 3% nonfat dry milk in TBST.

Detection: ECL Enhanced Kit (RM00021).

Exposure time: 120s.