

GID Rabbit pAb

Catalog No.: A20578

Basic Information

Observed MW

Refer to Figures

Calculated MW

39kDa

Category

Primary antibody

Applications

ELISA, WB

Cross-Reactivity

Oryza sativa

Background

Functions as soluble gibberellin (GA) receptor. GA is an essential hormone that regulates growth and development in plants. Binds with high affinity the biologically active GAs such as GA1, GA3 and GA4, but has low or no affinity for the biologically inactive GAs. Upon GA-binding, it interacts with the DELLA protein SLR1, a repressor of GA signaling. This leads to SLR1 degradation by the proteasome, allowing the GA signaling pathway.

Recommended Dilutions

WB 1:500 - 1:2000

Immunogen Information

Gene ID

4338764

Swiss Prot

Q6L545

Immunogen

Recombinant fusion protein containing a sequence corresponding to amino acids 200-300 of Oryza sativa GID. (Q6L545).

Synonyms

gid1; P0040B10.6; OJ1657_H11.10; GID

Contact

 | 400-999-6126

 | cn.market@abclonal.com.cn

 | www.abclonal.com.cn

Product Information

Source

Rabbit

Isotype

IgG

Purification

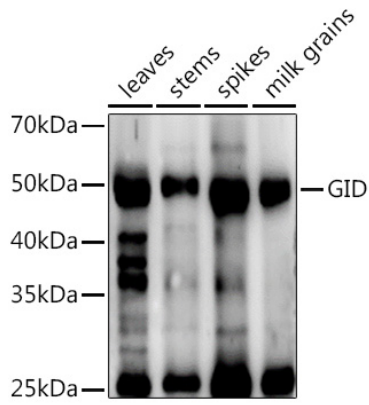
Affinity purification

Storage

Store at -20°C. Avoid freeze / thaw cycles.

Buffer: PBS with 0.05% proclin300, 50% glycerol, pH7.3.

Validation Data



Western blot analysis of extracts of various tissues from the japonica rice (*Oryza sativa* L.) variety Zhonghua 11, using GID Rabbit pAb (A20578) at 1:1000 dilution.
Secondary antibody: HRP-conjugated Goat anti-Rabbit IgG (H+L) (AS014) at 1:10000 dilution.
Lysates/proteins: 25µg per lane.
Blocking buffer: 3% nonfat dry milk in TBST.
Detection: ECL Enhanced Kit (RM00021).
Exposure time: 120s.