

Spata5 Rabbit pAb

Catalog No.: A20598

Basic Information

Observed MW

98kDa

Calculated MW

Category

Primary antibody

Applications

WB,IF/ICC,ELISA

Cross-Reactivity

Human, Mouse, Rat

Background

Predicted to enable ATP hydrolysis activity. Predicted to be involved in brain development. Predicted to act upstream of or within cell differentiation and spermatogenesis. Predicted to be located in spindle. Predicted to be active in cytoplasm. Is expressed in several structures, including cartilage; endocrine gland; genitourinary system; nervous system; and trachea. Orthologous to human SPATA5 (spermatogenesis associated 5).

Recommended Dilutions

WB 1:500 - 1:1000

IF/ICC 1:50 - 1:200

ELISA Recommended starting concentration is 1 µg/mL. Please optimize the concentration based on your specific assay requirements.

Immunogen Information

Gene ID

57815

Swiss Prot

Immunogen

Recombinant protein (or fragment). This information is considered to be commercially sensitive.

Synonyms

Spaf; 2510048F20Rik; Spata5

Contact

☎ | 400-999-6126

✉ | cn.market@abclonal.com.cn

🌐 | www.abclonal.com.cn

Product Information

Source

Rabbit

Isotype

IgG

Purification

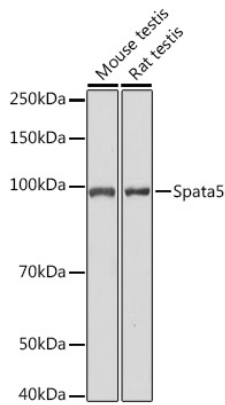
Affinity purification

Storage

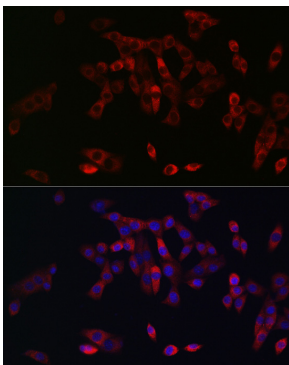
Store at -20°C. Avoid freeze / thaw cycles.

Buffer: PBS with 0.01% thimerosal, 50% glycerol, pH7.3.

Validation Data



Western blot analysis of various lysates using Spata5 Rabbit pAb (A20598) at 1:1000 dilution. Secondary antibody: HRP-conjugated Goat anti-Rabbit IgG (H+L) (AS014) at 1:10000 dilution. Lysates/proteins: 25µg per lane. Blocking buffer: 3% nonfat dry milk in TBST. Detection: ECL Basic Kit (RM00020). Exposure time: 3s.



Immunofluorescence analysis of NIH/3T3 cells using Spata5 Rabbit pAb (A20598) at dilution of 1:50 (40x lens). Secondary antibody: Cy3-conjugated Goat anti-Rabbit IgG (H+L) (AS007) at 1:500 dilution. Blue: DAPI for nuclear staining.