

SARS-CoV-2 Spike S1 Rabbit pAb

Catalog No.: A20604

Basic Information

Observed MW

200kDa

Calculated MW

139kDa

Category

Primary antibody

Applications

ELISA, WB

Cross-Reactivity

SARS-CoV

Background

The spike protein is a large type I transmembrane protein containing two subunits, S1 and S2. S1 mainly contains a receptor binding domain (RBD), which is responsible for recognizing the cell surface receptor. S2 contains basic elements needed for the membrane fusion. The S protein plays key parts in the induction of neutralizing-antibody and T-cell responses, as well as protective immunity. The main functions for the Spike protein are summarized as: Mediate receptor binding and membrane fusion; Defines the range of the hosts and specificity of the virus; Main component to bind with the neutralizing antibody; Key target for vaccine design; Can be transmitted between different hosts through gene recombination or mutation of the receptor binding domain (RBD), leading to a higher mortality rate.

Recommended Dilutions

WB 1:500 - 1:1000

Immunogen Information

Gene ID

1489668

Swiss Prot

P59594

Immunogen

A synthetic peptide corresponding to a sequence within amino acids 1-100 of coronavirus Spike S1 (NP_828851.1).

Synonyms

E2; SARS-CoV-2 Spike S1

Contact

☎ | 400-999-6126

✉ | cn.market@abclonal.com.cn

🌐 | www.abclonal.com.cn

Product Information

Source

Rabbit

Isotype

IgG

Purification

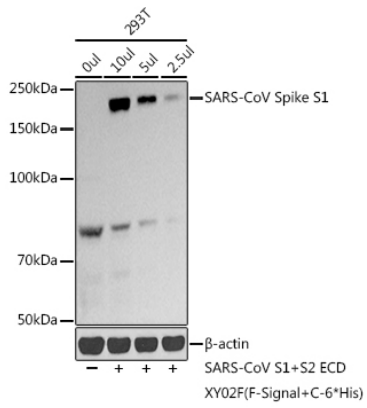
Affinity purification

Storage

Store at -20°C. Avoid freeze / thaw cycles.

Buffer: PBS with 0.05% proclin300, 50% glycerol, pH7.3.

Validation Data



Western blot analysis of various lysates using SARS-CoV-2 Spike S1 Rabbit pAb (A20604) at 1:1000 dilution.

Secondary antibody: HRP Goat Anti-Rabbit IgG (H+L) (AS014) at 1:10000 dilution.

Lysates/proteins: 25 μ g per lane.

Blocking buffer: 3% nonfat dry milk in TBST.

Detection: ECL Basic Kit (RM00020).

Exposure time: 1s.