

# HCoV-HKU1 Spike S1 Rabbit pAb

Catalog No.: A20613

## Basic Information

### Observed MW

75kDa/110kDa/145kDa

### Calculated MW

152kDa

### Category

Primary antibody

### Applications

WB, ELISA

### Cross-Reactivity

HCoV-HKU1

## Background

[Spike protein S1]: attaches the virion to the cell membrane by interacting with host receptor, initiating the infection.

## Recommended Dilutions

**WB** 1:100 - 1:500

**ELISA** Recommended starting concentration is 1 µg/mL. Please optimize the concentration based on your specific assay requirements.

## Immunogen Information

### Gene ID

3200426

### Swiss Prot

Q5MQD0

### Immunogen

A synthetic peptide corresponding to a sequence within amino acids 100-200 of coronavirus Spike S1 (YP\_173238.1).

### Synonyms

## Contact

☎ | 400-999-6126

✉ | [cn.market@abclonal.com.cn](mailto:cn.market@abclonal.com.cn)

🌐 | [www.abclonal.com.cn](http://www.abclonal.com.cn)

## Product Information

### Source

Rabbit

### Isotype

IgG

### Purification

Affinity purification

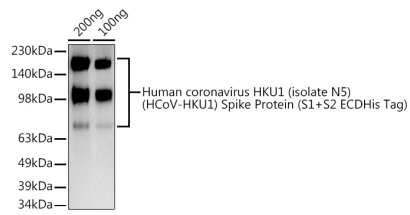
### Storage

Store at -20°C. Avoid freeze / thaw cycles.

Buffer: PBS with 0.05% proclin300, 50% glycerol, pH7.3.

## Validation Data

---



Western blot analysis of lysates from Human coronavirus HKU1 (isolate N5) (HCoV-HKU1) Spike Protein (S1+S2 ECDHis Tag), using HCoV-HKU1 Spike S1 Rabbit pAb (A20613) at 1:500 dilution.

Secondary antibody: HRP-conjugated Goat anti-Rabbit IgG (H+L) (AS014) at 1:10000 dilution.

Lysates/proteins: 25µg per lane.

Blocking buffer: 3% nonfat dry milk in TBST.

Detection: ECL Basic Kit (RM00020).

Exposure time: 180s.