

HCoV-HKU1 Spike S2 Rabbit pAb

Catalog No.: A20614

Basic Information

Observed MW

75kDa/145kDa

Calculated MW

152kDa

Category

Primary antibody

Applications

ELISA, WB

Cross-Reactivity

HCoV-HKU1

Background

[Spike protein S1]: attaches the virion to the cell membrane by interacting with host receptor, initiating the infection.

Recommended Dilutions

WB 1:500 - 1:1000

Immunogen Information

Gene ID

3200426

Swiss Prot

Q5MQD0

Immunogen

A synthetic peptide corresponding to a sequence within amino acids 800-900 of coronavirus Spike S2 (YP_173238.1).

Synonyms

Contact

 | 400-999-6126

 | cn.market@abclonal.com.cn

 | www.abclonal.com.cn

Product Information

Source

Rabbit

Isotype

IgG

Purification

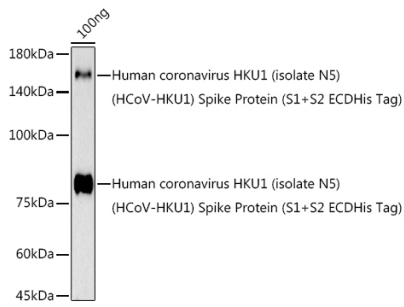
Affinity purification

Storage

Store at -20°C. Avoid freeze / thaw cycles.

Buffer: PBS with 0.05% proclin300, 50% glycerol, pH7.3.

Validation Data



Western blot analysis of lysates from Human coronavirus HKU1 (isolate N5) (HCoV-HKU1) Spike Protein (S1+S2 ECDHis Tag), using HCoV-HKU1 Spike S2 Rabbit pAb (A20614) at 1:1000 dilution.
Secondary antibody: HRP Goat Anti-Rabbit IgG (H+L) (AS014) at 1:10000 dilution.
Lysates/proteins: 25µg per lane.
Blocking buffer: 3% nonfat dry milk in TBST.
Detection: ECL Basic Kit (RM00020).
Exposure time: 180s.