

GF14b Rabbit pAb

Catalog No.: A20625 **1 Publications**

Basic Information

Observed MW

30kDa

Calculated MW

30kDa

Category

Primary antibody

Applications

ELISA, WB

Cross-Reactivity

Oryza sativa

Background

Is associated with a DNA binding complex that binds to the G box, a well-characterized cis-acting DNA regulatory element found in plant genes.

Recommended Dilutions

WB 1:500 - 1:2000

Immunogen Information

Gene ID

4336066

Swiss Prot

Q0JCM0

Immunogen

Recombinant protein of Oryza sativa GF14b.

Synonyms

GF14B; B0812A04.1; GF14b

Contact

 | 400-999-6126

 | cn.market@abclonal.com.cn

 | www.abclonal.com.cn

Product Information

Source

Rabbit

Isotype

IgG

Purification

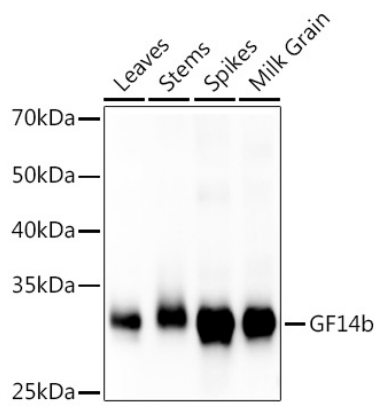
Affinity purification

Storage

Store at -20°C. Avoid freeze / thaw cycles.

Buffer: PBS with 0.05% proclin300, 50% glycerol, pH7.3.

Validation Data



Western blot analysis of extracts of various tissues from the japonica rice (*Oryza sativa* L.) variety Zhonghua 11, using GF14b Rabbit pAb (A20625) at 1:1000 dilution.
Secondary antibody: HRP Goat Anti-Rabbit IgG (H+L) (AS014) at 1:10000 dilution.
Lysates/proteins: 25µg per lane.
Blocking buffer: 3% nonfat dry milk in TBST.
Detection: ECL Basic Kit (RM00020).
Exposure time: 30s.