

Xa13 Rabbit pAb

Catalog No.: A20630

Basic Information

Observed MW

40kDa

Calculated MW

33kDa

Category

Primary antibody

Applications

ELISA, WB

Cross-Reactivity

Oryza sativa

Background

Mediates both low-affinity uptake and efflux of sugar across the plasma membrane. Required for pollen viability. Involved in the transport of copper, in cooperation with COPT1 and COPT2. Confers sensitivity to bacterial blight mediated by *X.oryzae* pv. *oryzae* (Xoo) in its Xa13 allelic form (e.g. cv. IR24), probably by providing the sugar required for the pathogen growth, or by reducing copper contents in xylem. However, a recessive resistance can be associated with the xa13 allele (in which the promoter is mutated leading to reduced induction upon pathogen infection, e.g. cv. IRBB13), specifically toward Xoo Philippine race 6 and Indian race PXO8.

Recommended Dilutions

WB 1:500 - 1:2000

Immunogen Information

Gene ID

4346153

Swiss Prot

Q6YZF3

Immunogen

Recombinant protein of *Oryza sativa* Xa13.

Synonyms

XA13; Os8N3; SWEET11; OsJ_28080; OsSWEET11; Xa13

Contact

☎ | 400-999-6126

✉ | cn.market@abclonal.com.cn

🌐 | www.abclonal.com.cn

Product Information

Source

Rabbit

Isotype

IgG

Purification

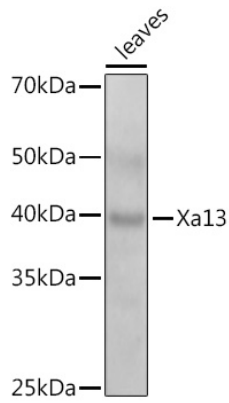
Affinity purification

Storage

Store at -20°C. Avoid freeze / thaw cycles.

Buffer: PBS with 0.05% proclin300, 50% glycerol, pH7.3.

Validation Data



Western blot analysis of extracts of various tissues from the japonica rice (*Oryza sativa* L.) variety Zhonghua 11, using Xa13 Rabbit pAb (A20630) at 1:1000 dilution.
Secondary antibody: HRP Goat Anti-Rabbit IgG (H+L) (AS014) at 1:10000 dilution.
Lysates/proteins: 25µg per lane.
Blocking buffer: 3% nonfat dry milk in TBST.
Detection: ECL Enhanced Kit (RM00021).
Exposure time: 60s.