

Hd16 Rabbit pAb

Catalog No.: A20633

Basic Information

Observed MW

70kDa

Calculated MW

79kDa

Category

Primary antibody

Applications

ELISA, WB

Cross-Reactivity

Oryza sativa

Background

EL1 is a novel and key regulator of the GA response□can specifically phosphorylates the rice DELLA protein SLR1

Recommended Dilutions

WB 1:500 - 1:2000

Immunogen Information

Gene ID

4334396

Swiss Prot

Immunogen

Recombinant fusion protein containing a sequence corresponding to amino acids 15-115 of Oryza sativa Hd16. (Q852L0).

Synonyms

CKI; EL1; Hd16; Osj_12923

Contact

☎ | 400-999-6126

✉ | cn.market@abclonal.com.cn

🌐 | www.abclonal.com.cn

Product Information

Source

Rabbit

Isotype

IgG

Purification

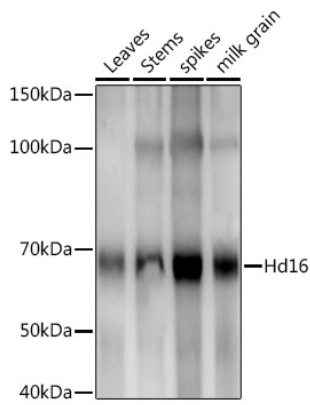
Affinity purification

Storage

Store at -20°C. Avoid freeze / thaw cycles.

Buffer: PBS with 0.05% proclin300, 50% glycerol, pH7.3.

Validation Data



Western blot analysis of extracts of various tissues from the japonica rice (*Oryza sativa* L.) variety Zhonghua 11, using Hd16 Rabbit pAb (A20633) at 1:1000 dilution.
Secondary antibody: HRP Goat Anti-Rabbit IgG (H+L) (AS014) at 1:10000 dilution.
Lysates/proteins: 25µg per lane.
Blocking buffer: 3% nonfat dry milk in TBST.
Detection: ECL Enhanced Kit (RM00021).
Exposure time: 30s.