

OsSERK2 Rabbit pAb

Catalog No.: A20637

Basic Information

Observed MW

70kDa

Calculated MW

70kDa

Category

Primary antibody

Applications

WB, ELISA

Cross-Reactivity

Oryza sativa

Background

LRR receptor kinase involved in positive regulation of somatic embryogenesis and defense response against the rice blast fungus pathogen *Magnaporthe oryzae*. Involved in the positive regulation of receptor kinase-mediated immunity. Required for immunity mediated by the LRR receptor kinases XA21 and XA26/XA3 which recognize effectors from the bacterial pathogen *Xanthomonas oryzae* pv. *oryzae* (Xoo). Required for the immune response mediated by the LRR receptor kinase FLS2 which recognizes specifically the bacterial flagellin (flg22) effector. Kinase activity and direct interaction with the immune receptors is critical for their function

Recommended Dilutions

WB 1:500 - 1:2000

ELISA Recommended starting concentration is 1 µg/mL. Please optimize the concentration based on your specific assay requirements.

Immunogen Information

Gene ID

4336035

Swiss Prot

Q7XV05

Immunogen

Recombinant protein (or fragment). This information is considered to be commercially sensitive.

Synonyms

OsSERK1; OsSERK2

Contact

☎ | 400-999-6126

✉ | cn.market@abclonal.com.cn

🌐 | www.abclonal.com.cn

Product Information

Source

Rabbit

Isotype

IgG

Purification

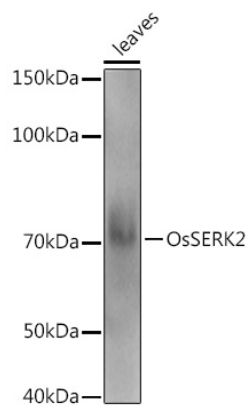
Affinity purification

Storage

Store at -20°C. Avoid freeze / thaw cycles.

Buffer: PBS containing 50% glycerol, preserved with proclin300 or sodium azide (as specified on the Certificate of Analysis), pH 7.3.

Validation Data



Western blot analysis of extracts of various tissues from the japonica rice (*Oryza sativa* L.) variety Zhonghua 11, using OsSERK2 Rabbit pAb (A20637) at 1:1000 dilution.

Secondary antibody: HRP-conjugated Goat anti-Rabbit IgG (H+L) (AS014) at 1:10000 dilution.

Lysates/proteins: 25µg per lane.

Blocking buffer: 3% nonfat dry milk in TBST.

Detection: ECL Enhanced Kit (RM00021).

Exposure time: 10s.