

BC12 Rabbit pAb

Catalog No.: A20638

Basic Information

Observed MW

116kDa

Calculated MW

116kDa

Category

Primary antibody

Applications

ELISA, WB

Cross-Reactivity

Oryza sativa

Background

Microtubule-dependent motor protein involved in the control of the oriented deposition of cellulose microfibrils. Involved in wall biogenesis and modification, and contributes to cell-cycle progression and cell division. Acts as a transcriptional activator in gibberellic acid (GA) biosynthesis pathway. Binds specifically to the DNA sequence 5'-ACCAACTTGAA-3' of the ent-kaurene oxidase 2 (CYP701A6 or OsKO2) promoter. May regulate CYP701A6 gene expression and mediates cell elongation by regulating the GA biosynthesis pathway

Recommended Dilutions

WB 1:500 - 1:2000

Immunogen Information

Gene ID

4346402

Swiss Prot

Q6YUL8

Immunogen

Recombinant fusion protein containing a sequence corresponding to amino acids 840-970 of Oryza sativa BC12. (Q6YUL8).

Synonyms

BC2; GDD1; KIF4-like; Osj_28385; OJ1134_E08.39-1; OJ1134_E08.39-2; OJ1134_E08.39-3; BC12

Contact

☎ | 400-999-6126

✉ | cn.market@abclonal.com.cn

🌐 | www.abclonal.com.cn

Product Information

Source

Rabbit

Isotype

IgG

Purification

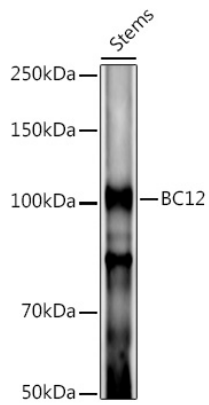
Affinity purification

Storage

Store at -20°C. Avoid freeze / thaw cycles.

Buffer: PBS with 0.05% proclin300, 50% glycerol, pH7.3.

Validation Data



Western blot analysis of extracts of various tissues from the japonica rice (*Oryza sativa* L.) variety Zhonghua 11, using BC12 Rabbit pAb (A20638) at 1:1000 dilution.

Secondary antibody: HRP Goat Anti-Rabbit IgG (H+L) (AS014) at 1:10000 dilution.

Lysates/proteins: 25µg per lane.

Blocking buffer: 3% nonfat dry milk in TBST.

Detection: ECL Basic Kit (RM00020).

Exposure time: 120s.