

CAL Rabbit pAb

Catalog No.: A20639

Basic Information

Observed MW

9kDa

Calculated MW

9kDa

Category

Primary antibody

Applications

ELISA, WB

Cross-Reactivity

Oryza sativa

Background

Plant defensin-like protein involved in accumulation of cadmium (Cd) in rice leaves. Mediates Cd efflux from cytosol into extracellular spaces via chelation. This drives Cd secretion from xylem parenchyma cells into the xylem vessels, hence lowering Cd levels in cytosol meanwhile promoting Cd translocation from roots to shoots.

Recommended Dilutions

WB 1:500 - 1:2000

Immunogen Information

Gene ID

4330051

Swiss Prot

Q6K209

Immunogen

Recombinant fusion protein containing a sequence corresponding to amino acids 1-80 of Oryza sativa CAL. (Q6K209).

Synonyms

BC12; CAL

Contact

 | 400-999-6126

 | cn.market@abclonal.com.cn

 | www.abclonal.com.cn

Product Information

Source

Rabbit

Isotype

IgG

Purification

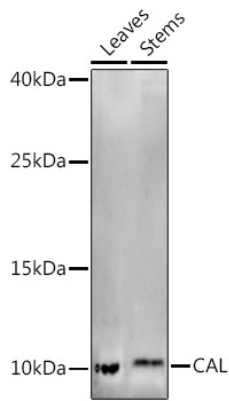
Affinity purification

Storage

Store at -20°C. Avoid freeze / thaw cycles.

Buffer: PBS with 0.05% proclin300, 50% glycerol, pH7.3.

Validation Data



Western blot analysis of extracts of various tissues from the japonica rice (*Oryza sativa* L.) variety Zhonghua 11, using CAL Rabbit pAb (A20639) at 1:1000 dilution.
Secondary antibody: HRP Goat Anti-Rabbit IgG (H+L) (AS014) at 1:10000 dilution.
Lysates/proteins: 25µg per lane.
Blocking buffer: 3% nonfat dry milk in TBST.
Detection: ECL Enhanced Kit (RM00021).
Exposure time: 60s.