

CTB4a Rabbit pAb

Catalog No.: A20640

Basic Information

Observed MW

120kDa

Calculated MW

120kDa

Category

Primary antibody

Applications

ELISA, WB

Cross-Reactivity

Oryza sativa

Background

CTB4a (cold tolerance at booting stage), encoding a conserved leucine-rich repeat receptor-like kinase. The different CTB4a alleles confer distinct levels of cold tolerance and selection for variation in the CTB4a promoter region has occurred on the basis of environmental temperature.

Recommended Dilutions

WB 1:500 - 1:2000

Immunogen Information

Gene ID

4335004

Swiss Prot

Q0JF76

Immunogen

Recombinant fusion protein containing a sequence corresponding to amino acids 32-152 of Oryza sativa CTB4a. (Q0JF76).

Synonyms

LRR-PK1; CTB4a

Contact

☎ | 400-999-6126

✉ | cn.market@abclonal.com.cn

🌐 | www.abclonal.com.cn

Product Information

Source

Rabbit

Isotype

IgG

Purification

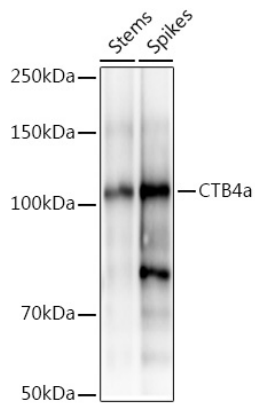
Affinity purification

Storage

Store at -20°C. Avoid freeze / thaw cycles.

Buffer: PBS with 0.05% proclin300, 50% glycerol, pH7.3.

Validation Data



Western blot analysis of extracts of various tissues from the japonica rice (*Oryza sativa* L.) variety Zhonghua 11, using CTB4a Rabbit pAb (A20640) at 1:1000 dilution.

Secondary antibody: HRP Goat Anti-Rabbit IgG (H+L) (AS014) at 1:10000 dilution.

Lysates/proteins: 25µg per lane.

Blocking buffer: 3% nonfat dry milk in TBST.

Detection: ECL Basic Kit (RM00020).

Exposure time: 30s.