

OsHI-LOX Rabbit pAb

Catalog No.: A20642

Basic Information

Observed MW

103kDa

Calculated MW

103kDa

Category

Primary antibody

Applications

ELISA, WB

Cross-Reactivity

Oryza sativa

Background

Plant lipoxygenase may be involved in a number of diverse aspects of plant physiology including growth and development, pest resistance, and senescence or responses to wounding.

Recommended Dilutions

WB 1:500 - 1:2000

Immunogen Information

Gene ID

4345993

Swiss Prot

Q0J4K2

Immunogen

Recombinant protein of Oryza sativa OsHI-LOX.

Synonyms

LOX8; LOX2.1; CM-LOX1; lox2osPil; OsHI-LOX

Contact

 | 400-999-6126

 | cn.market@abclonal.com.cn

 | www.abclonal.com.cn

Product Information

Source

Rabbit

Isotype

IgG

Purification

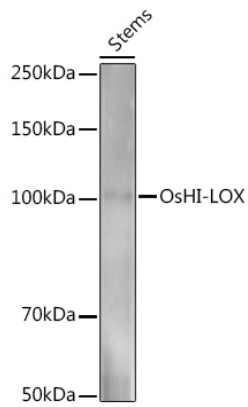
Affinity purification

Storage

Store at -20°C. Avoid freeze / thaw cycles.

Buffer: PBS with 0.05% proclin300, 50% glycerol, pH7.3.

Validation Data



Western blot analysis of extracts of various tissues from the japonica rice (*Oryza sativa* L.) variety Zhonghua 11, using OsHI-LOX Rabbit pAb (A20642) at 1:1000 dilution.
Secondary antibody: HRP Goat Anti-Rabbit IgG (H+L) (AS014) at 1:10000 dilution.
Lysates/proteins: 25 μ g per lane.
Blocking buffer: 3% nonfat dry milk in TBST.
Detection: ECL Basic Kit (RM00020).
Exposure time: 120s.