

# OsHAL3 Rabbit pAb

Catalog No.: A20656 **1 Publications**

## Basic Information

### Observed MW

26kDa

### Calculated MW

24kDa

### Category

Primary antibody

### Applications

ELISA, WB

### Cross-Reactivity

Oryza sativa

## Background

OsHAL3, a novel light-responsive protein, plays an essential role in photoperiodic control of flowering time in rice, which is probably mediated by forming a complex with Hd1

## Recommended Dilutions

WB 1:500 - 1:2000

## Immunogen Information

### Gene ID

4340408

### Swiss Prot

C6L686

### Immunogen

Recombinant fusion protein containing a sequence corresponding to amino acids 100-200 of Oryza sativa OsHAL3. (Q69K55).

### Synonyms

HAL3; PPCDC; OsHAL3; OsJ\_20467; OJ1147\_D11.5-1

## Contact

☎ | 400-999-6126

✉ | [cn.market@abclonal.com.cn](mailto:cn.market@abclonal.com.cn)

🌐 | [www.abclonal.com.cn](http://www.abclonal.com.cn)

## Product Information

### Source

Rabbit

### Isotype

IgG

### Purification

Affinity purification

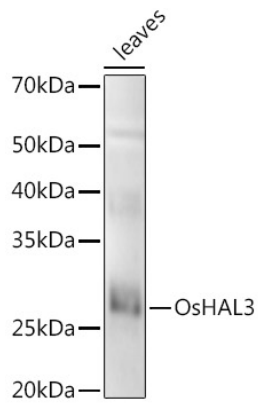
### Storage

Store at -20°C. Avoid freeze / thaw cycles.

Buffer: PBS with 0.05% proclin300, 50% glycerol, pH7.3.

## Validation Data

---



Western blot analysis of extracts of various tissues from the japonica rice (*Oryza sativa* L.) variety Zhonghua 11, using OsHAL3 Rabbit pAb (A20656) at 1:1000 dilution.

Secondary antibody: HRP Goat Anti-Rabbit IgG (H+L) (AS014) at 1:10000 dilution.

Lysates/proteins: 25µg per lane.

Blocking buffer: 3% nonfat dry milk in TBST.

Detection: ECL Enhanced Kit (RM00021).

Exposure time: 30s.