

OsWRKY30 Rabbit pAb

Catalog No.: A20659

Basic Information

Observed MW

30kDa

Calculated MW

24kDa

Category

Primary antibody

Applications

ELISA, WB

Cross-Reactivity

Oryza sativa

Background

OsWRKY30 functions as a positive regulator of rice disease resistance via an SA signaling pathway.

Recommended Dilutions

WB 1:500 - 1:2000

Immunogen Information

Gene ID

Swiss Prot

Immunogen

Recombinant protein of Oryza sativa OsWRKY30.

Synonyms

OsWRKY30

Contact

 | 400-999-6126

 | cn.market@abclonal.com.cn

 | www.abclonal.com.cn

Product Information

Source

Rabbit

Isotype

IgG

Purification

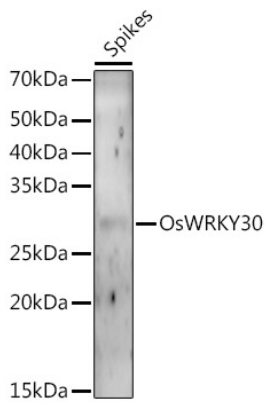
Affinity purification

Storage

Store at -20°C. Avoid freeze / thaw cycles.

Buffer: PBS with 0.05% proclin300, 50% glycerol, pH7.3.

Validation Data



Western blot analysis of extracts of various tissues from the japonica rice (*Oryza sativa* L.) variety Zhonghua 11, using OsWRKY30 Rabbit pAb (A20659) at 1:1000 dilution.
Secondary antibody: HRP Goat Anti-Rabbit IgG (H+L) (AS014) at 1:10000 dilution.
Lysates/proteins: 25µg per lane.
Blocking buffer: 3% nonfat dry milk in TBST.
Detection: ECL Enhanced Kit (RM00021).
Exposure time: 120s.