

# D14 Rabbit pAb

Catalog No.: A20661

## Basic Information

### Observed MW

36kDa

### Calculated MW

34kDa

### Category

Primary antibody

### Applications

ELISA, WB

### Cross-Reactivity

Oryza sativa

## Background

Involved in strigolactone (SL) signaling pathway. May function downstream of SL synthesis, as a component of hormone signaling or as an enzyme that participates in the conversion of SL to the bioactive form.

## Recommended Dilutions

WB 1:500 - 1:2000

## Immunogen Information

### Gene ID

4331983

### Swiss Prot

Q10QA5

### Immunogen

Recombinant protein of Oryza sativa D14.

### Synonyms

D14; D88; HTD2

## Contact

☎ | 400-999-6126

✉ | [cn.market@abclonal.com.cn](mailto:cn.market@abclonal.com.cn)

🌐 | [www.abclonal.com.cn](http://www.abclonal.com.cn)

## Product Information

### Source

Rabbit

### Isotype

IgG

### Purification

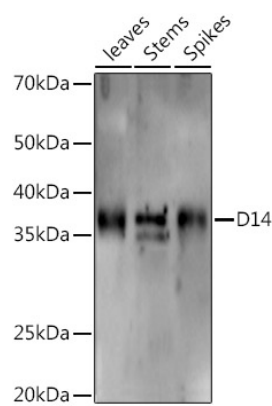
Affinity purification

### Storage

Store at -20°C. Avoid freeze / thaw cycles.

Buffer: PBS with 0.05% proclin300, 50% glycerol, pH7.3.

Validation Data



Western blot analysis of extracts of various tissues from the japonica rice (*Oryza sativa* L.) variety Zhonghua 11, using D14 Rabbit pAb (A20661) at 1:1000 dilution.  
Secondary antibody: HRP Goat Anti-Rabbit IgG (H+L) (AS014) at 1:10000 dilution.  
Lysates/proteins: 25µg per lane.  
Blocking buffer: 3% nonfat dry milk in TBST.  
Detection: ECL Enhanced Kit (RM00021).  
Exposure time: 120s.