

OsMADS15 Rabbit pAb

Catalog No.: A20662

Basic Information

Observed MW

30kDa

Calculated MW

30kDa

Category

Primary antibody

Applications

ELISA, WB

Cross-Reactivity

Oryza sativa

Background

an ortholog of Arabidopsis AP1 gene

Recommended Dilutions

WB 1:500 - 1:2000

Immunogen Information

Gene ID

4342214

Swiss Prot

Q6Q9I2

Immunogen

Recombinant fusion protein containing a sequence corresponding to amino acids 167-267 of Oryza sativa OsMADS15. (Q6Q9I2).

Synonyms

RAP1A; MADS15; FDRMADS3; OsMADS15; RMADS215; OJ1567_G09.109-1

Contact

☎ | 400-999-6126

✉ | cn.market@abclonal.com.cn

🌐 | www.abclonal.com.cn

Product Information

Source

Rabbit

Isotype

IgG

Purification

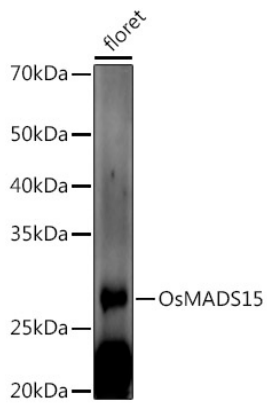
Affinity purification

Storage

Store at -20°C. Avoid freeze / thaw cycles.

Buffer: PBS with 0.05% proclin300, 50% glycerol, pH7.3.

Validation Data



Western blot analysis of extracts of various tissues from the japonica rice (*Oryza sativa* L.) variety Zhonghua 11, using OsMADS15 Rabbit pAb (A20662) at 1:1000 dilution. Secondary antibody: HRP Goat Anti-Rabbit IgG (H+L) (AS014) at 1:10000 dilution. Lysates/proteins: 25µg per lane. Blocking buffer: 3% nonfat dry milk in TBST. Detection: ECL Enhanced Kit (RM00021). Exposure time: 60s.