

OsAAP6 Rabbit pAb

Catalog No.: A20666

Basic Information

Observed MW

50kDa

Calculated MW

50kDa

Category

Primary antibody

Applications

ELISA, WB

Cross-Reactivity

Oryza sativa

Background

OsAAP6 greatly enhances root absorption of a range of amino acids and has effects on the distribution of various amino acids.

Recommended Dilutions

WB 1:500 - 1:2000

Immunogen Information

Gene ID

4325094

Swiss Prot

Q5N9H2

Immunogen

Recombinant fusion protein containing a sequence corresponding to amino acids 1-100 of Oryza sativa OsAAP6. (Q5N9H2).

Synonyms

OsAAP6; qPC1

Contact

☎ | 400-999-6126

✉ | cn.market@abclonal.com.cn

🌐 | www.abclonal.com.cn

Product Information

Source

Rabbit

Isotype

IgG

Purification

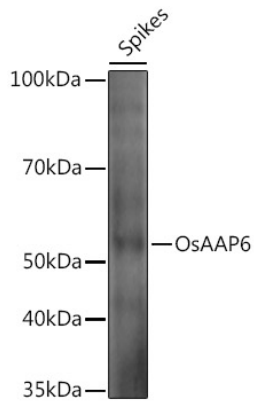
Affinity purification

Storage

Store at -20°C. Avoid freeze / thaw cycles.

Buffer: PBS with 0.05% proclin300, 50% glycerol, pH7.3.

Validation Data



Western blot analysis of extracts of various tissues from the japonica rice (*Oryza sativa* L.) variety Zhonghua 11, using OsAAP6 Rabbit pAb (A20666) at 1:1000 dilution.
Secondary antibody: HRP Goat Anti-Rabbit IgG (H+L) (AS014) at 1:10000 dilution.
Lysates/proteins: 25µg per lane.
Blocking buffer: 3% nonfat dry milk in TBST.
Detection: ECL Enhanced Kit (RM00021).
Exposure time: 30s.