

OsGI Rabbit pAb

Catalog No.: A20671

Basic Information

Observed MW

100kDa

Calculated MW

127kDa

Category

Primary antibody

Applications

ELISA, WB

Cross-Reactivity

Oryza sativa

Background

Involved in regulation of circadian rhythm, and in the control of the photoperiodic flowering. Acts as suppressor of flowering under short-day (SD) and long-day (LD) conditions. Activates Hd1/CONSTANS gene.

Recommended Dilutions

WB 1:500 - 1:2000

Immunogen Information

Gene ID

4325329

Swiss Prot

Q0JQ44

Immunogen

Recombinant fusion protein containing a sequence corresponding to amino acids 820-1090 of Oryza sativa OsGI. (Q9AWL7).

Synonyms

GI; OsGI

Contact

 | 400-999-6126

 | cn.market@abclonal.com.cn

 | www.abclonal.com.cn

Product Information

Source

Rabbit

Isotype

IgG

Purification

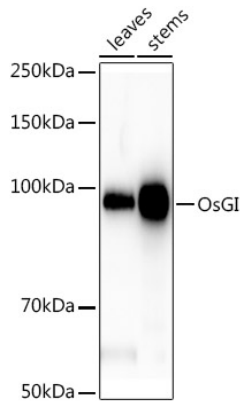
Affinity purification

Storage

Store at -20°C. Avoid freeze / thaw cycles.

Buffer: PBS with 0.05% proclin300, 50% glycerol, pH7.3.

Validation Data



Western blot analysis of extracts of various tissues from the japonica rice (*Oryza sativa* L.) variety Zhonghua 11, using OsGI Rabbit pAb (A20671) at 1:1000 dilution.

Secondary antibody: HRP Goat Anti-Rabbit IgG (H+L) (AS014) at 1:10000 dilution.

Lysates/proteins: 25µg per lane.

Blocking buffer: 3% nonfat dry milk in TBST.

Detection: ECL Basic Kit (RM00020).

Exposure time: 60s.